



BETHESDA  
ACADEMY

2012-2013 ANNUAL REPORT

BETHESDA ACADEMY PROVIDES YOUNG  
MEN A TRANSFORMATIVE SECOND  
CHANCE AT SUCCESS BY PROMOTING AND  
INSTILLING, A LOVE OF GOD, A LOVE OF  
LEARNING, AND A STRONG WORK ETHIC.



## THANK YOU FROM THE BOARD CHAIRMAN

**Board of Governors  
Bethesda-Union Society  
of Savannah, Inc.  
2012 - 2013**

Dave Smith, Chair  
Mills Fleming, Vice-Chair  
Trey Cook, Secretary  
Ellen Bolch, Treasurer

Jamie Deen  
Jim Emery  
Jim Giddens  
Nancy Gooch  
Lee Hughes  
Michael Kaigler  
Cliff McCurry  
Paul Pressly  
Kathy Pacifici  
Swann Seiler  
Scott Snipes  
Mike Viers

Ex-officio  
Ivy Monroe, President  
The Women's Board of Bethesda  
David Tribble, President  
Bethesda Academy

**Board of Governors  
Bethesda-Union Society  
of Savannah, Inc.  
2013 - 2014**

Mills Fleming, Chairman  
John Helmken, Vice-Chairman  
Trey Cook, Secretary  
Mike Viers, Treasurer

Jamie Deen  
Maggie Gill  
Nancy Gooch  
Lee Hughes  
Michael Kaigler  
Cliff McCurry  
Paul Pressly  
Kathy Pacifici  
Swann Seiler  
Scott Snipes

Ex-officio  
Anne Coakley, President  
The Women's Board of Bethesda  
David Tribble, President  
Bethesda Academy

Dear Friends of Bethesda Academy,

In April 2013, I had the privilege and honor to begin a new chapter of service as I stepped into my role as chairman of the board at Bethesda Academy. In doing so, I fully embraced the weight of this new responsibility. I am passionate about our community and actively support educational initiatives founded in faith, integrity and moral virtues. With the support of an enthusiastic board, I was ready to face the challenges ahead.

One of my first orders of business was to take part in the commencement ceremonies for Bethesda Academy's graduating Class of 2013. Standing alongside David Tribble, president of Bethesda Academy, I embraced the firm handshakes of each remarkable young man as I helped hand out those hard-earned diplomas. Consumed with pride, in that moment I felt the profound impact of Bethesda Academy and the overwhelming understanding of its core values – "a Love of God, a Love of Learning and a Strong Work Ethic." I will never forget the palpable sense of devotion between the staff, teachers, students and parents on that day. It was truly an experience of a lifetime.

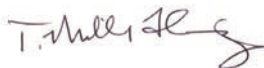
Going forward, my goal as your chairman is to promote honest and transparent communications to our friends, family and patrons of Bethesda Academy. As we began the 2012/2013 fiscal year, the board was facing a deficit budget – largely due to a significant reduction in the annual distribution from our Endowment. Therefore, in conjunction with the valiant fund development efforts of Bethesda's staff and board members, the school utilized its line of credit to operate with a balanced budget in order to continue our longstanding tradition of academic excellence and innovative approach to learning that distinguishes Bethesda Academy.

We have a solid plan in place to ensure the long-term financial stability of Bethesda Academy. I invite you to learn more about our students' successes, our future goals and Bethesda's fiscal health in the 2012/2013 Annual Report.

Bethesda Academy is a special place and our students will go on to do great things. We should be proud of everything Bethesda stands for and has represented for centuries.

On behalf of our board, it is our great honor to serve Bethesda Academy. We remain committed to fostering long-term growth and prosperity to ensure that young men for generations to come will continue to thrive here at Bethesda Academy.

Most sincerely,



T. Mills Fleming  
*Chairman, Board of Governors, Bethesda-Union Society of Savannah, Inc.*



# A MESSAGE FROM THE PRESIDENT



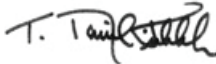
If the experts in child development are right, then the most important goal of adolescence is for a child to discover his sense of identity...his place in the world. For adults, watching this process is somewhat reminiscent of watching little children bowl with bumper guards. We all want our kids to throw strikes, so we try to buffer the gutter balls as best we can. But the challenge of adolescence means that the stakes are much higher than kiddie bowling. College, careers, and life commitments, are just on the other side of teenager-hood. And the clock is ticking.

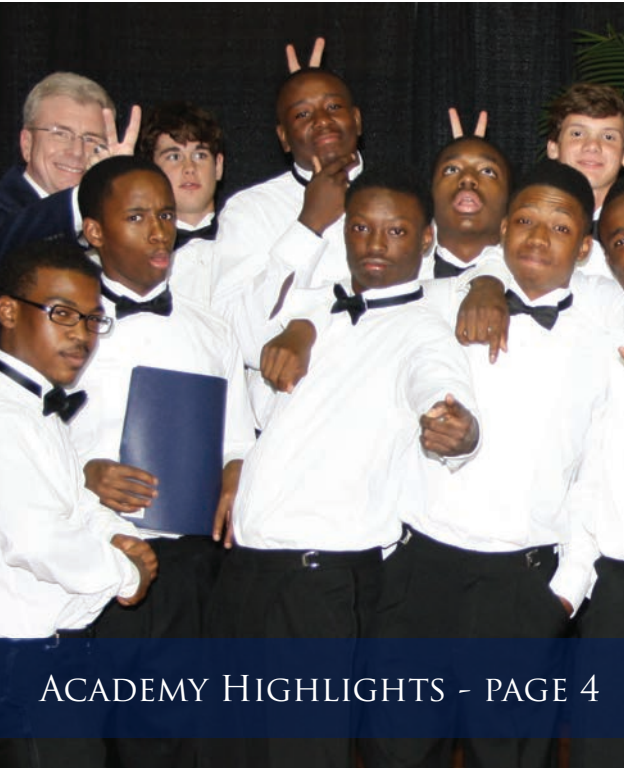
That is where Bethesda Academy steps in - right in the middle of this dynamic boy process of growing into manhood. And while *all* schools deal with this same process as we corporately educate boys, the engagement that Bethesda seeks goes right to the heart of where our students' families are most concerned. The boy that is failing, yet has the aptitude to do so much better. The child that has been repeatedly bullied. The boy who is rebellious and angry about the breakup of his family.

The young man who looks at life with little ambition or lacks future goals. Often we hear from parents who, with great anguish, share the story of their son who "just doesn't fit", and is dead set on getting out of school as quickly as he can.

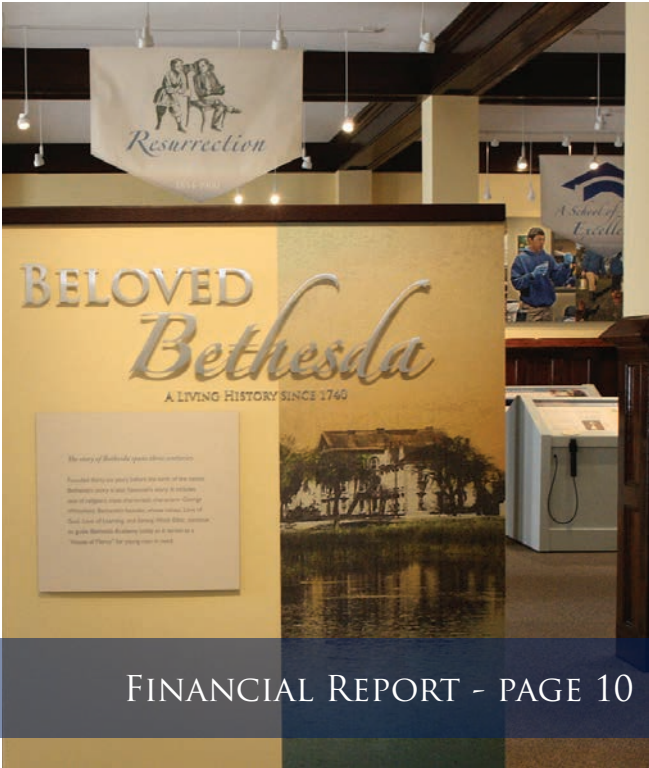
Bethesda Academy becomes that place where boys grow into men. They find their sense of identity. Along the way, our boys learn in small classroom settings, play on our athletic teams, participate in chapel, Bible study, and a variety of work opportunities. Each day students interact with staff and faculty who specialize in academics, spiritual formation, and work experience. Bethesda becomes a proving ground for boys who have never lived with nine other brothers, or played organized sports, or planted a garden, or milked a goat, or played chess (ranked #14 in the nation - just so you know). At Bethesda, boys laugh, get dirty, learn, pray...and connect.

Bethesda Academy becomes that place where lives are simply, but powerfully, transformed. We celebrate that over 85% of our graduates go on to college, with the remaining graduates split between work and military service. Our graduates tell us time and again that Bethesda will always be the place where their life took on new meaning and direction. This report can only partially represent the dynamic work that inspires our mission and purpose. Founder George Whitefield stated our mission quite clearly, "A love of God, a love of learning, and a strong work ethic." Our young men know our mission and, as they connect to these life lessons, new horizons are opened and realized.

Blessings,  
  
T. David Tribble, D.Min.  
President



ACADEMY HIGHLIGHTS - PAGE 4



FINANCIAL REPORT - PAGE 10



UNIQUELY BETHESDA



## THANK YOU FROM DIRECTOR OF DEVELOPMENT

Reverend George Whitefield opened the doors to Bethesda in 1740 with three core values and, 273 years later, Bethesda Academy continues to be led by this same value equation that emphasizes the holistic development of our students in mind, body, and spirit. The role of fund development at Bethesda is to inspire you and others in supporting and investing in this transformative mission that we see lived out in the choices and growth that our students are demonstrating every day.



In development, we aim to say, “Thank you” more often than we ask, “Please, will you?” but we recognize that it may not feel that way from the perspective of our supporters and investors. Because of that, Bethesda Academy actively looks for ways to express our gratitude with more than the words. While the “thank you” is important to hear, we supplement those words with year-round updates of our students’ successes. Whether highlighted in the classroom, or State Championships in Track & Field events, or the accomplishments of a nationally ranked chess team, or a volunteer service project, or at our Commencement Ceremony, we hope that you see each success as a very personal thank you. We do our best to share those stories with you often, because when you give your time, talent, and treasure, you need to know that it is not only appreciated, but making a difference.

Every academic step forward, every new program implemented, every athletic win celebrated happens because so many people care enough to say, “Yes!” when we call with a “Please, will you?” And it’s the power behind those collective “Yeses” that allows Bethesda Academy to offer incomparable financial aid packages to families who know that this highly supportive, values-driven environment is the right place for their son, but need tuition assistance to make it happen. When you say “Yes” in support of the Annual Fund, Gateway Scholarships, the GOAL Scholarship Program, capital projects, special events – or when you shop at our weekly Farm Stand, or visit the Ford Museum & Visitor’s Center, or hunt on the Wildlife Sanctuary & Preserve – your “Yes” is being translated into transformative experiences for young men who truly deserve our community’s investment.

While you have heard it throughout the year, on behalf of Bethesda’s faculty and staff, our young men and their families, thank you for your support. We hope this Annual Report will not only serve as affirmation that your investment in Bethesda Academy is a good one, but that it will inspire continued “Yeses” to the next “Please, will you?” because we simply cannot do what we do without you.

Many thanks,



Andrea B. Dove

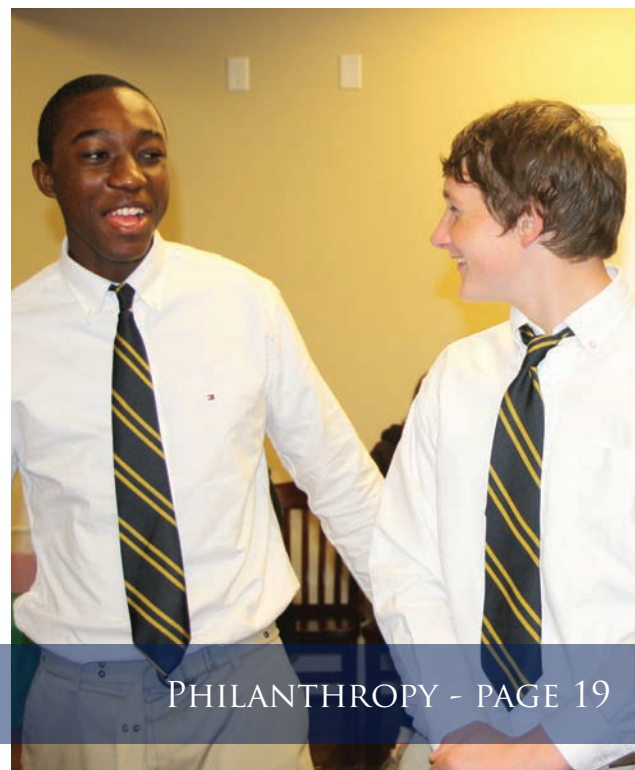
*Director of Development*



BETHESDA - PAGE 11



SPECIAL EVENTS - PAGE 17



PHILANTHROPY - PAGE 19





# ACADEMY HIGHLIGHTS: 2012 IN REVIEW



## July 2012

- Individual workstations constructed for a learning lab
- Wildlife Management expands with a new quail house
- Bethesda student is awarded a BP-GOAL Scholarship



## August 2012

- Summer renovations are completed
- Boarding students move onto campus
- 2012-13 academic year begins



## September 2012

- President's Dinner takes place
- In preparation for a new soap partnership with Nourish, students participating in the Farm & Garden program learn to milk goats
- Launch of Bethesda's Wildlife Sanctuary & Preserve, offering quail hunts and sport dog training



## October 2012

- Rep. Jack Kingston hosts Academy Day on campus
- Blazers Football turns pink to raise money for Breast Cancer Awareness Month
- Rotary West holds installation of Interact Club
- Bethesda Day is held with functions for corporate leaders, area guidance counselors, and other friends of Bethesda
- DIRT installs additional offices in Burroughs Hall to prepare for museum renovation

## November 2012

- Renovation of the museum begins
- Thanksgiving lunch for Students and Alumni
- Blazer basketball season kicks-off
- Nourish and Bethesda begin offering two varieties of specialty soaps made with goat milk from Bethesda

## December 2012

- Flag Retirement Ceremony
- Installation of museum exhibits begins
- Kim Polote joins students for Lessons & Carols Christmas Program
- Student vs. Alumni Holiday Basketball Classic
- Armstrong Atlantic State University Pi Kappa Alphas and Bethesda students hold Annual Basketball Game and Christmas party



# 2012



# ACADEMY HIGHLIGHTS: 2013 IN REVIEW



## January 2013

- Chess Team competes in Brunswick
- The Women's Board of Bethesda holds the Yates-Astro Resolution Race 5k on campus
- Bethesda students travel to the Capital to meet with Chatham County delegation to discuss the Education Tax Credit pending legislature
- Bethesda holds Annual Sporting Clays event



## February 2013

- Museum ribbon cutting held for museum
- Bethesda student qualifies as a STAR Student
- Don Mann, author and retired Navy SEAL, visits campus as part of the Savannah Book Festival



## March 2013

- Track & Field, Baseball, and Golf seasons begin
- Two Blazer student-athletes are invited to play in 2013 GISA All-Star Basketball Game
- Grand Opening of the William H. Ford, Sr. Museum & Visitor's Center
- Bethesda 500 Mouse Trap Race is held to celebrate 100 Days of Science



## April 2013

- Bethesda celebrates its 273rd Anniversary
- Blazers Track and Field team advances to the GISA AAA State Track Meet
- Chess Team places 14th in the US Super Nationals Chess Tournament in Nashville

## May 2013

- Bethesda holds Celebrity Sports Weekend
- Blazers "three-peat" as State Champs in both the 100M Run and the 200M Run; place 2nd in the 4x400M Relay; and take State Championship in Long Jump
- 2013 Commencement Ceremony is held
- 2012-2013 academic year ends

## June 2013

- Renovation begins on Cohen Cottage
- Blazer football workouts begin
- Horizons Savannah begins the 2013 summer enrichment program for grades 6-8 at Bethesda
- National Resources Conservation Services (NRCS) holds a "Farmer Field Day" workshop at Bethesda for veterans and under-served producers



# 2013





## HIGHLIGHTS: NOTABLE ACHIEVEMENTS

We are proud to celebrate the many achievements earned during the 2012-13 academic and fiscal year, but there are a few that are especially notable.



This year saw Bethesda Academy's first STAR Student in **Trevor McMahon**, who went on to become the 2013 Valedictorian. To be nominated for STAR, high school seniors must have the highest score on one test date on the three-part SAT taken through the November test date of their senior year *and* be in the top 10% or top 10 students of their class based on GPA. Nominees' SAT scores must be equal to or higher than the latest available national average on the math, critical reading and writing sections. STAR Students, in turn, recognize a STAR Teacher for their help and support. Trevor chose **Rusty Perry** as his STAR Teacher.

Early in 2013, Dr. Tribble and Keith Kilgore, Dean of Students, accompanied a small group of students to Atlanta to meet with the Chatham County delegation. With new legislation pending on the Qualified Education Tax Credit, **Henry Brown, Jalin Rice, and Nathan West** were with our elected officials in the Capital discussing how the program (which allows tax payers to direct GA taxes into scholarships) has greatly impacted their educational opportunities.



The Bethesda **Chess Team** finished the "season" with a **14th place finish at the 2013 US SuperNationals**. With 5,335 participants, the 2013 tournament became the world's largest over-the-board chess tournament. Held once every 4 years, the SuperNationals event attracts competitors from every grade level, Kindergarten to 12th grade, to compete all under one roof at the Gaylord Opryland in Nashville. Participants came from 47 states, plus Washington DC and Puerto Rico. Top prizes included university scholarships and places on the US team to the World Youth Championships which will be held in the United Arab Emirates in December.

Middle school student **Tristan Gray**, was nominated for a Volunteer Award by the Humane Society of Greater Savannah for his work with their organization. Tristan was recognized at Hands on Savannah's Annual Volunteer Recognition Awards luncheon. Below is an excerpt from Tristan's nomination:

*"Tristan comes across as quiet and reserved but when set to a task, delivers above and beyond what is asked of him. He is steadfast and playful in his interactions with the animals as well as the staff. It's so pleasant having him around as he adds a very sweet and gentle, youthful touch to our staff..." - Erin Fontes*



The 2012-13 school year was also the launch of Bethesda's **Peer Mediation Program**. A select group of students were trained by The Mediation Center in conflict resolution, good listening techniques, and problem-solving skills. The goal is to prepare students to help their peers resolve issues in a constructive manner. As a result of this student-led effort, The Mediation Center recognized Bethesda as **Rookie School of the Year**.





## HIGHLIGHTS: 2013 GRADUATION



“ The stress I felt later went away, because I started to ask for help. Then I felt reassured because I had the encouragement and support of my teachers and fellow classmates...I have truly enjoyed my time here as a Bethesda student. ”  
*Brandon Bostic, Valedictorian  
Class of 2013*

In May, the faculty and staff joined with the families of eighteen young men in pride and celebration as they received their diplomas and turned toward their futures beyond the historic arch of Bethesda. Of our graduates, sixteen are heading off to college, one is joining the workforce, and Bethesda's long-standing involvement with the armed forces continues with one young man joining the Army. As with each class, we are excited to see the success that awaits each graduate.



Bethesda salutes the Class of 2013 as their journeys continue:

Albany State University  
Armstrong Atlantic State University  
Art Institute of Atlanta  
Benedict College  
Brewton Parker College  
Fort Valley State University

Georgia State University  
Mercer University  
Mississippi State University  
Morehouse College  
Ogeechee Technical College  
Regent University (VA)

Savannah College of Art & Design  
Savannah Technical College  
SNF Holding Company  
South Carolina State University  
The Newport News Apprentice School of Shipbuilding  
Valdosta State University  
The United States Army





## HIGHLIGHTS: 2013 SPECIAL GUESTS



“Visiting with the fine young men at the Bethesda Academy was a real honor. I truly enjoyed speaking with the folks at the Academy and truly believe that they are all going to do really well in life and in all that they pursue. I wish them continued success in all they do in life.”  
*Don Mann*  
former Navy SEAL, Team 6

Each year, Bethesda is blessed with individuals who visit campus and talk with our young men. There were some amazing presentations during the 2013-13 school year and our students were truly impacted, impressed, and often moved by the experiences shared by these very special guests. Bethesda would like to recognize a few of those guests who presented a wide array of topics and talents with uniform candor and honesty. Thanks to all many people, including the many volunteers and tutors, who spend time and share their wisdom with our students!



Jon Stinchcomb, former UGA and Super Bowl winning New Orleans Saints lineman, met with some of our student athletes with a powerful message of remembering “who you are” and “whose you are”. Jon also told some funny stories from his time as a collegiate and professional athlete and passed his Super Bowl ring around!



Marquis Mason, Bethesda Academy Class of 2012, was extremely candid while speaking to the students about the importance of the company you keep and staying on the right path. Marquis was seriously injured in a random act of gun violence and he showed incredible poise in sharing what he and his family experienced.



The Dover Quartet came to campus via the Savannah Music Festival. They managed to truly engage over 100 teenage boys in a discussion on classical music! Each member of the quartet explained the different elements contributed by each instrument to the overall composition, as well as the emotion sound can evoke.





## HIGHLIGHTS: WILLIAM H. FORD, SR. MUSEUM & VISITORS CENTER



“ The new Ford Museum offers a handsome synopsis of Bethesda's history that visitors should make a point to see.  
*Daniel Carey, President & CEO  
Historic Savannah Foundation* ”

It has been more than 273 years since George Whitefield's dream of the “Bethesda Orphan House and Academy” became a reality. Orphans are part of our past; however now Bethesda serves students who are in need of the unique educational environment we provide. We are an Academy - and our young men leave us college-ready.

Sharing our rich history is important, as is telling our “present” because Bethesda Academy continues to grow. Needing a place to tell our past, celebrate our present, and display future goals was met with the family of former Superintendent William H. Ford, Sr.'s desire to create something to honor Rev. Ford, the only “Bethesda boy” who came back to lead the organization. The museum concept was discussed, launching the monumental task to renovate the museum into a true Museum & Visitors Center.

It has been a three-year journey to create a place that would present Bethesda's rich history, acknowledge Bill Ford's legacy, and celebrate who we are today. After working with Jodi Marcil, of Jodi Marcil Design Studio in St. Augustine, the project came to life and the doors opened to the public on March 23, 2013. The William H. Ford, Sr. Museum & Visitor's Center is located on the 1st floor of Burroughs Hall - one of the oldest structures on campus, built in 1860. The museum is spread out over 3,000 sq ft and designed as an interactive, self-guided experience with video and audio enhancements throughout. There is a room dedicated to Bethesda Alumni, where many of the old photographs and scrapbooks have been digitally archived on computers. There is a room warmly dedicated to Bill Ford and his accomplishments. And, finally, there is a room dedicated to Bethesda Academy - the place making today's history. This area provides a space to showcase that our students are not orphans, but young men who are succeeding in the highly supportive educational environment we provide. This will be further exemplified by training our Student Ambassadors as docents as part of our existing work-study program.

Our hope is that guests leave the William H. Ford, Sr. Museum & Visitor's Center with a deep appreciation of an organization that is not only the oldest continuously operating children's charity in the nation, but is a living, breathing, vibrant school for boys who are eager to make “new” history.

For more information, including hours of operation, please visit us online at:  
[www.BethesdaMuseum.org](http://www.BethesdaMuseum.org)

### BETHESDA ACADEMY GRATEFULLY ACKNOWLEDGES THE FOLLOWING INDIVIDUALS & INSTITUTIONS FOR MAKING THIS EXHIBIT POSSIBLE:

Mr. and Mrs. Rollin Ford & Family  
Mrs. William H. Ford, Sr.  
Mr. and Mrs. Charlton Veazey, Jr.  
Mr. and Mrs. Charles Ford, Sr. & Family  
Mr. William H. Ford, Jr.  
Estate of Romulus Marshall Barbour  
Soderquist Family Foundation

Bethesda-Union Society of Savannah, Inc. Board of Governors  
Mrs. Mae R. Jones  
Wal-Mart Foundation  
The Women's Board of Bethesda

Leon and Lenore Campbell  
Mr. and Mrs. T. P. Cook  
Ms. Catherine B. Cravey  
Mr. and Mrs. William F. McIlrath, Sr.  
Toccoa Falls College

Ms. Annie C. Ash  
Mr. and Mrs. John P. Bartlett  
Wynona C. Clements  
Mr. and Mrs. James V. Crist  
Mr. and Mrs. J. R. Dominey  
Mr. and Mrs. Mark A. Weiler

*and those donors who wish to remain anonymous*



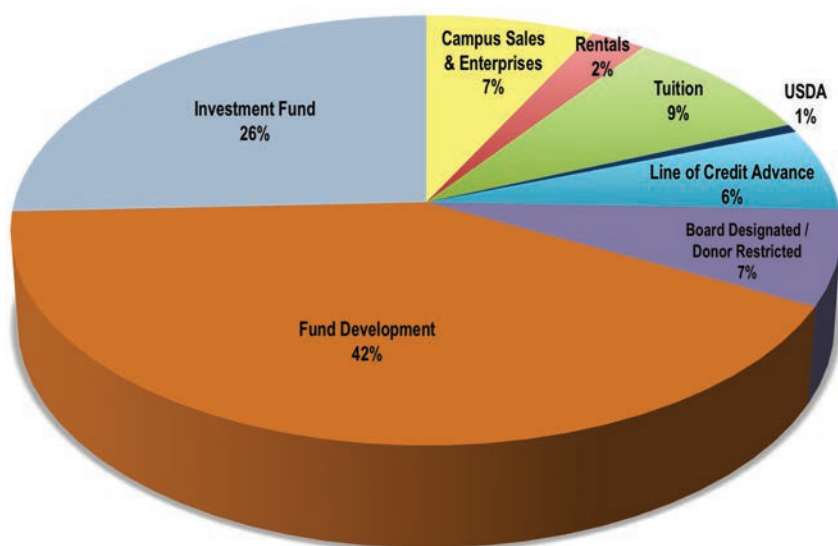
# FINANCIAL REPORT: 2012-2013 FISCAL YEAR

The Board of Governors, Finance Committee, Endowment Trust Committee, and staff went into 2012-13 budget process facing a known budget deficit due to the market conditions that determine the annual distribution from the endowment. With aggressive fundraising efforts, careful spending, and prudent use of our line of credit, Bethesda Academy continued to deliver organizational excellence with accountability and efficiency. Bethesda also receives an annual independent audit, which has consistently been given an unqualified audit opinion.

Even with a balanced budget, it is important to remember that tuition revenues represented less than 10% of the operating budget of the school. Bethesda Academy offers a generous financial aid program and, as a result, every student receives tuition support through financial aid. The majority of these awards are made possible through our annual endowment disbursement and contributions received through fund raising efforts including: Annual Fund, Gateway Scholarship, GOAL Scholarship, and Special Events. Supporting those development efforts continues to be essential in bridging the gap between tuition revenues the full cost of a Bethesda Academy education. As we move forward, please know that Bethesda's staff and Board of Governors remain committed to being good stewards of the resources invested in us, and that our collaborative efforts will positively impact the lives of the young men of Bethesda Academy.

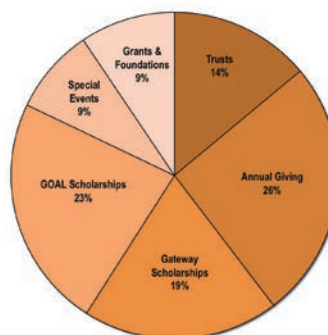
## Financial Summary June 30, 2013 (Unaudited)

### Revenue



Campus Sales & Enterprises	\$268,871
Rentals	\$88,558
Tuition	\$318,781
USDA	\$21,698
Line of Credit Advance	\$225,000
Board Designated/Donor Restricted	\$256,659
Investment Fund	\$928,081
Fund Development	\$1,506,004

**Total Revenue: \$3,613,652**

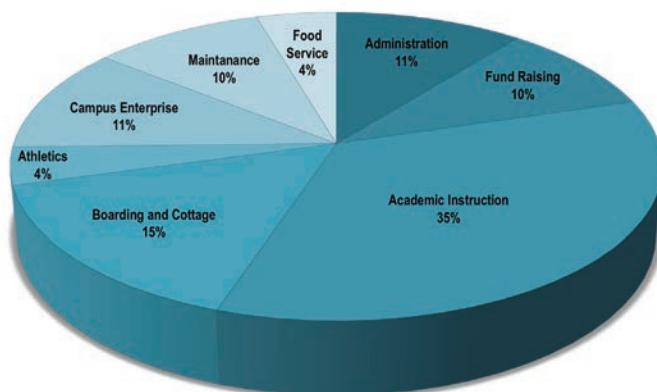


### Fund Development Detail

Trusts	\$210,131
Annual Giving	\$386,816
Gateway Scholarships	\$292,102
GOAL Scholarships *	\$347,536
Grants/Foundations	\$141,881
Special Events	\$127,538

**Fund Development total: \$1,506,004**

### Expenses



Administration	\$388,868
Fund Raising	\$346,200
Academic Instruction	\$1,258,143
Boarding and Cottage	\$560,745
Athletics	\$142,442
Campus Enterprise	\$399,192
Maintenance	\$352,408
Food Service	\$165,081

**Total Expense: \$3,613,079**

Salaries and Benefits are included in the respective cost center.  
Salaries and Benefits totaled \$2,456,589 (68%) of the expense budget.





## UNIQUELY BETHESDA: CAMPUS SALES & ENTERPRISES



One of the many features that sets Bethesda Academy apart from other schools is our extensive campus, which lends itself to teaching students about personal industry while helping our overall fiscal health. During the 2012-13 fiscal year, sales, rentals, and enterprises contributed approximately 10% of our revenue budget - in real numbers, more than \$350,000. Finding ways to creatively utilize our campus resources has inspired our staff and students to venture into programming that truly is “uniquely Bethesda.”

What can be done with a heard of dwarf Nigerian goats beyond the traditional purposes of the Farm & Garden? The idea to partner with Nourish to produce a goat's milk soap developed quite quickly and, in November of 2012 (just in time for the holidays!), two magnificent scents of Bethesda Academy Farm & Gardens soap had been created and were for sale on the shelves at Nourish, as well as our weekly campus Farm Stand. Our students learned how to milk goats on the farm and then sell the finished product to Farm Stand customers.



Bethesda also considered how to best utilize part of our property for the benefit of the school and the native plants and wildlife. After much research and many discussions with the Department of Natural Resources, the Wildlife Sanctuary & Preserve was launched. What may have looked like simply a local place to enjoy guided quail hunts and pheasant shoots, took significant work for the Wildlife staff and students - including controlled burns to eliminate bad growth, opening the tree thick canopy to let the sunlight through, and planting foliage to spur new plant growth and attract animal life. The 2012-13 hunting season was so successful that the Board of Governors and the staff determined that the Bethesda Academy Wildlife Sanctuary & Preserve could be better managed and maintained on a limited membership basis. In early June, memberships to the Wildlife Sanctuary & Preserve were offered and, by June 30th, all available memberships had been sold. This was great affirmation for the decision

to launch the Preserve, but also to limit the access. The Preserve has already seen extensive growth in native flora and fauna and a resurgence of a variety of animal life. The students have learned the importance of preparing and caring for our natural resources, along with having the opportunity to be part of a new business enterprise that ultimately helps support Bethesda's financial aid program.

Campus Rentals are another popular enterprise for Bethesda. The Whitefield Chapel is regularly booked for weddings, but in 2012-13, Bethesda also began renting other areas of campus for wedding receptions and corporate events, meetings, and retreats. There has been such growing interest in the use of our campus, that a website dedicated to Bethesda Academy Campus Rentals has been created. For more information, visit: [www.BethesdaRentals.org](http://www.BethesdaRentals.org).





## UNIQUELY BETHESDA: A LOVE OF GOD...BEYOND THE CHAPEL



As Chaplain, my primary responsibility is oversight of instilling “a love of God” and the Lord blessed us with another school year to enlighten, encourage, and empower our young men to embrace a Love of God and develop a Love *for* God. As one would expect, we focused on this value in our weekly Chapel services. But what about beyond the Chapel? How have we taught our young men to think beyond themselves and about their community - be it school, home, neighborhood, city? That process goes well beyond the doors of the Whitefield Chapel and, if mastered, will propel them well into being successful, responsible, and empathic adult men.

Throughout the year, we implemented a variety of activities to reinforce the love of God, beginning with the Prayer at the Flagpole on the 1st day of school. Each day, a student led the morning prayer on the intercom. Along with the Bible, we used other books, such as “The Purpose Driven Life” by Rick Warren. Our boarding students also participated in weekly Bible studies.

That time was spent in the Word, but also in thoughtful discussion about real-life situations that our students felt comfortable sharing. The students began getting comfortable with using God’s Word to encourage, educate, and empower each other.

Bethesda also hosted 2K Strive, a quarterly outreach effort, that invited different youth groups to join us in worship that included songs, dance, poetry, games, personal testimonies, and more. Our Fellowship of Christian Athletes (FCA) membership had great participation from our student-athletes. One of the annual highlights is the FCA Football Camp held during the summer. This has been a way for the Blazer football team to both develop athletic skills through scrimmages and explore and develop spiritual skills during the off-field FCA group activities and presentations.



Bethesda’s students took time to volunteer on campus and in the community. Whether reading to the students at Hesse Elementary, supporting canned food drives for America’s Second Harvest, raising money for breast cancer awareness, or visiting with seniors in assisted living, our students shine when giving back.

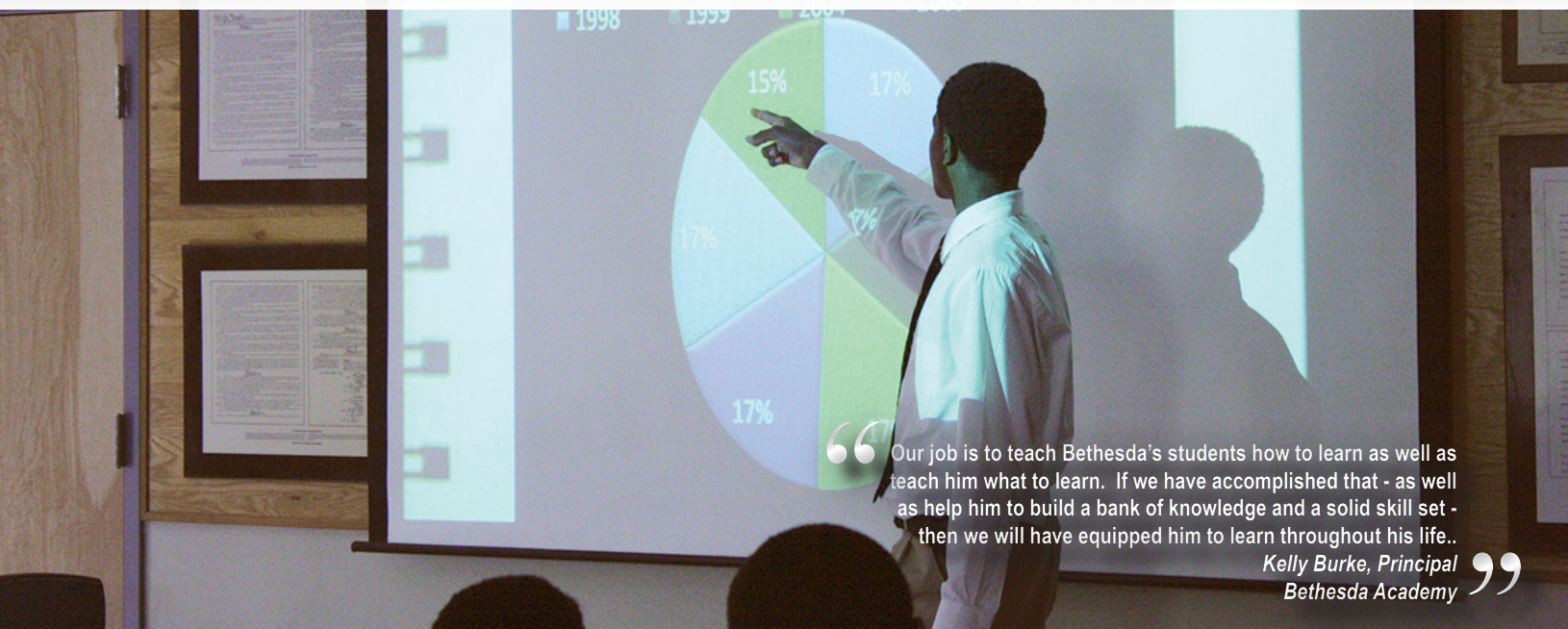
It has been a great reward to witness our students as they have walked their individual faith journeys. Bethesda has always been a melting pot of faiths and denominations, but we are all here to serve something bigger than ourselves. Whether our young men are in the classroom, the cottage, the garden, or the athletic field, at Bethesda Academy, instilling “a love of God” beyond the Chapel is an intentionally campus-wide process.

*Antwain Turner  
Chaplain and Athletic Director*





# UNIQUELY BETHESDA: A LOVE OF LEARNING...BEYOND THE CLASSROOM



“Our job is to teach Bethesda’s students how to learn as well as teach him what to learn. If we have accomplished that - as well as help him to build a bank of knowledge and a solid skill set - then we will have equipped him to learn throughout his life..”

*Kelly Burke, Principal  
Bethesda Academy*

When walking the grounds of Bethesda, it is easy to gaze out over the marsh and envision many young men whiling away a sunny afternoon with a fishing pole and some bait. No doubt, through the generations, a lot of conversations – and a lot of teaching - has taken place while waiting on the fish to bite on the banks of the Moon River. There is an adage that to feed a man, you do not give him a fish, you give him a fishing pole - the intent being that you give a person the tools with which to feed himself.

For today’s Bethesda students, that fishing pole is a computer and the bait is an internet connection. Surprised? Don’t be.

With a computer and the internet, textbooks that were updated once every seven or eight years are now web-based and can be updated with recent, factual, correct information in the blink of an eye. Information that is presented is embedded with quality video instruction (which makes it easier to review for tests), pop-up definitions and pronunciations for new vocabulary, interactive practice problems for math class and audio spoken by native speakers for foreign language class. Because so many learning resources are web-based, the concept of learning taking place only in a classroom between the hours of 8 and 3 is replaced by learning on a 24/7 basis. Students can access assignments, research, instruction and notes anytime, anyplace and as frequently or infrequently as needed to succeed.

So, is this “online learning”? No. It’s online information, online instruction, online research, online video and online animation. The “learning” part takes place where it has always taken place - within the student. Today’s Bethesda student will be a student for the rest of his life. Research shows that even after successfully completing college, most adults in the workforce go through professional development and/or re-training at least ten times in their professional career. The successful ones go through even more.

And what role do teachers play? Computers do not inspire students - teachers do! Computers can impart information in a variety of new and exciting ways, but they cannot create, nor inspire, nor convey judgment or affirmation. Only a highly qualified, motivated teacher can do those things and that is what our teachers do each day at Bethesda Academy. They lead instruction, find resources, ask the questions that create spirited class discussion and set standards and expectations of our students’ efforts. No computer can replace that in a classroom. And more importantly, teachers understand that the more “teaching voices” a student hears, the more he will be motivated and inspired to learn.

So Bethesda students hear from people like Don Mann, a highly decorated former special services soldier who authors best-selling novels. They attend concerts in Bethesda’s Chapel performed by world-renown artists like the Dover String Quartet from the Curtis Institute of Music. They work side-by-side with Bethesda staff members in Bethesda’s organic garden, cattle farm, wildlife sanctuary or dining hall. They trudge through Bethesda’s marsh to discover new ways to protect the environment and collect the odd snake, insect, or crab to reside in the Media Center’s vivarium for a few days.

And occasionally, they catch a fish.  
George Whitefield would be proud.

*Kelly Burke  
Principal & VP of Operations*





## UNIQUELY BETHESDA: A STRONG WORK ETHIC...BEYOND THE LABOR

Bethesda students are well acquainted with the many jobs available on a campus of 650 acres. Our boys work in a variety of settings - from the cafeteria to the Farm & Garden, the Wildlife Sanctuary & Preserve, and the athletic training center. We can easily see the results of our students' work: vegetables are harvested, eggs are washed, floors are mopped, and animals are feed. But what is sometimes not seen, quite as readily, is the growing work ethic being instilled in our students.

The young man that comes to Bethesda academically trailing will have his work ethic tested. Once his regular classroom schedule is completed and homework accomplished, he may have many more hours ahead of him as he works toward course recovery, or receives extra tutoring to bridge learning gaps. Even during the summers, some students come very early in the morning to work toward course credit to help them catch up to their graduating class.



Athletes work well beyond the scheduled school day as they compete and represent Blazer Pride. Football, basketball, baseball, track and field, and golf, represents a tremendous commitment on the part of our student-athletes who will manage their classwork and grades so that their athletic pursuits can be realized. During victories, commitment and dedication come easy, but our student-athletes also learn the importance of maintaining that same level of performance after a defeat. Students who compete athletically regularly display their work ethic.

Students who board on campus, will usually start and end their day with a work assignment inside their cottage of 10-12 brothers. Bathrooms are cleaned, laundry is done, beds are made, furniture is dusted. The question we consistently receive from visitors is, "Who keeps the cottages looking so clean, and the bedrooms so orderly?" The answer again lies in the work ethic displayed by our students.



At Bethesda Academy, our students' work ethic is in full view, from the physical labor displayed on the farm, to the mental labor of the classroom, to the last ounce of energy given on the athletic fields. Work and labor at Bethesda Academy are taught as a privilege, not as a punishment. "A strong work ethic," is that margin of difference that will dictate a young man's willingness to go the extra mile, to keep striving when it would be so easy to quit.

So when a young man displays his work skills of interacting with our customers at the farm stand, or fills an order from a local restaurant, or leads a campus tour for new students and visitors, he is sharing much more than just how he is required to fill his time. He is also demonstrating that he is learning that his work ethic and sense of personal industry is what is going to make all the difference in his goals and dreams for his future.





## UNIQUELY BETHESDA: ALUMNI ENGAGEMENT

“ I really enjoy coming back during the year to reconnect with old friends and meeting the new students. During my years at Bethesda, people there became like family to me. It is great to be able to bring my family to campus for the different events now and introduce them to each other.

*D'Tavias Cooper*  
Bethesda Alum

”



In September 2012, Bethesda was proud to welcome Jay Avery “home” to be the featured speaker at the annual President’s Dinner. A recent graduate from Emory University, Jay was kind enough to share his story and Bethesda’s impact on his life - and it was a powerful story to hear. We also planned the inaugural Homecoming Weekend Alumni - Coaches Flag Football Game, as well as the Christmas Holiday Basketball Classic. At each event, there was definitely athletic competition - sprinkled with a little good-natured ribbing - and, of course, the games end in the dining hall with food and fellowship. Our current students look to these recent alumni not only as friends, but mentors. The recent alumni very naturally step into that role and are quick to offer guidance (“study hard!”) and encouragement.

It is very common to have recent alumni come back during the summer to participate in football workouts and conditioning. They find a way to attend various sporting events throughout the year. It is even common for the Blazers to see familiar faces in the stands or on the sidelines when the “away” game is near an alum’s college.

Our graduates try to make it to campus for the Thanksgiving lunch or to watch their younger friends sign scholarship acceptance letters or to join us for the Graduation ceremony. That visible support is as important to the current students as it is affirming to faculty and staff, who truly enjoy watching these former students continue growing into engaged, community-minded young adults.





## UNIQUELY BETHESDA: BOARDING PROGRAM

“Under the guidance of dedicated Cottage Teachers and Staff, the boarding program at Bethesda is an experience for young men that prepares them for the future. Once they realize that becoming part of the team and taking care of the business at hand takes priority, there is plenty of time for fun – and they have a blast.”  
*Keith Kilgore, Dean of Students  
Bethesda Academy*

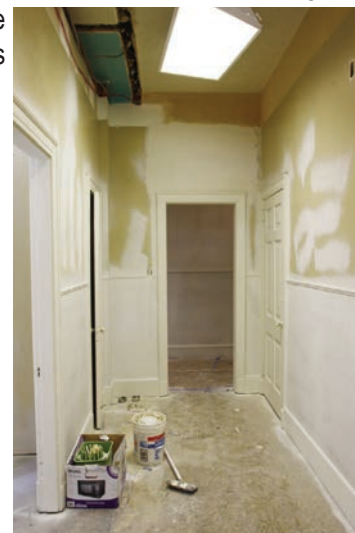


With four boarding cottages on campus, Bethesda is able to accommodate approximately 46 boarding students. The boarding program offers extended programming for our students and convenience for their families. Beyond additional structure and support, our boarders continue to benefit from learning how to live in community. This includes everything from cleaning up after themselves to compromising to treating others respectfully. Learning how to live with 10-12 other young men from a variety of backgrounds alone presents quite a learning curve. The boarding curriculum also includes weekly Bible studies, evening tutorials, life skill training, and various volunteer opportunities. In the midst of all that, the boarding students find time to ride bikes, fish, kayak, play basketball, and just enjoy being outdoors on this magnificent campus. During the 2012-13 school year, Bethesda began planning monthly Family Nights. These evenings are geared toward fun and fellowship among the students, their families, and

the Cottage Teachers. There were pool parties, movie nights, cook outs and even a talent show!

With all of the activities, all the responsibilities, all the athletics, all the school work - and all the unavoidable bursts of tension stemming from suddenly living with 10 of their peers, what we most often hear from our students is an appreciation for the brotherhood that naturally develops as they learn to navigate their teenage years together.

Of the four cottages in use, Alumni, Robinson, Hepper Hall at Perkins Cottage, had all been renovated and Cohen Cottage was in dire need. **The Women's Board of Bethesda** stepped in to help by creating and implementing the inaugural **Yates-Astro Resolution Race 5k** in January 2013. The race took place on Bethesda's campus and gave runners and walkers unprecedented access to the campus - along the marsh line, through the cattle pastures, and by the Farm & Garden. Because of the event's success, The Women's Board was able to commit to purchasing all the furniture for Cohen Cottage. The renovations began in early summer and Cohen Cottage will be operational for the 2013-14 academic year.







“ We have a long history with Bethesda Academy as a business partner, but to see the on-going success of their students is what really drives our commitment as a sponsor and supporter of the great work and mission that Bethesda is involved in.  
*Mark Senn, President & CEO*  
*Blanchard & Calhoun Commercial*  
*Augusta, GA* ”

Bethesda continues to look for creative ways to maintain and expand upon our generous financial aid program; therefore, special events take place throughout the year. These events have proven to be of great benefit to our fundraising efforts and our “friend-raising” efforts as well. They provide our students an opportunity to interact with and thank local and regional business leaders. Time spent with Bethesda’s students proves to be an impactful return on investment for the participants.

The **4th Annual Bethesda Sporting Clays Tournament** took place in January at Forest City Gun Club. The tournament grew to 24 teams and some of Bethesda’s students worked as trappers for the event. And, besides getting to miss a few classes, they truly enjoyed being a part of the shoot! The event included a wild game lunch as well as a post-shoot cocktail reception featuring wild game hors d’oeuvres. We would like to thank **Blanchard & Calhoun Commercial** and **Kroger** for their presenting sponsorship of the tournament.

In May, the **Bethesda Celebrity Sports Weekend** began with Thursday’s Game of Life Kick-Off Dinner, featuring keynote speaker Matt Stinchcomb - former offensive lineman for the Georgia Bulldogs, Oakland Raiders (Super Bowl XXXVII), and Tampa Bay Buccaneers. The Celebrity Golf Tournament took place at The Club at Savannah Harbor on Friday, with comprised of threesomes of golfers and a celebrity served as the fourth in the group. On Saturday, the celebrity athletes, along with our friends from Bolles Academy in Jacksonville, FL, facilitated the Celebrity Sports Camp. The camp was free and open to children throughout the community. It was a weekend packed with activity for adults and children alike! Bethesda would like to give special recognition to **R.B. Baker Construction** for their title sponsorship and for their tireless volunteer efforts throughout the weekend.





## SPECIAL EVENTS: SPONSORS AND PARTNERS

ABC Cutting Contractors, Inc.  
 Aggregates USA  
 APC Mabbett Transport  
 ASC Construction Equipment  
 AV Logistics  
 Baker Infrastructure Group, Inc.  
 Bart, Meyer & Company  
 BB&T  
 Doug Bean Signs \*  
 Bernie's Too, Inc.  
 Bethesda Alumni Association  
 Blanchard & Calhoun Commercial  
 Blanchard Machinery Co.  
 Blue Force Gear, Inc.



Bojangles' \*  
 Bouchillon's Collision Center, Inc.  
 Mr. and Mrs. Edward W. Bradley, Jr.  
 Brasseler USA  
 Caddie Master Enterprises, Inc.  
 The Coastal Bank  
 Coggins Promotional Advertising, Inc.  
 Pepsi Cola \*  
 Speedy Concrete Cutting  
 Terracon Consultants, Inc.



Cintas Corporation  
 LCDR R. S. Cutler, USCG (Ret.)  
 Cutter's Point \*  
 Dabbs, Hickman, Hill & Cannon, LLP  
 Diamond Concrete Products, LLC  
 Dry Creek Investments, Inc.  
 Ellis Wood Contracting  
 EnviroVac  
 F & W Forestry Services, Inc.  
 Flint Equipment Company  
 Evans General Contractors  
 George K. Gannam Unit 184,  
 American Legion Auxiliary  
 Georgia Highway Contractors Assn. Inc.  
 Georgia Power  
 Georgia Surveyors Exchange  
 Company  
 Griffin Contracting, Inc.  
 Holland, Henry & Bromley  
 Hyatt Savannah \*  
 Integrated Network Solutions  
 J.M. Wood Auction Co., Inc.  
 John Davis Florist & Balloon \*  
 JTVS Builders, Inc.

Kroger  
 Kudzo Staffing  
 Lane-Lee Trucking Co.  
 Martin Marietta Materials  
 Moffatt & Nichol  
 Morgan Stanley  
 Mr. Hugh S. Golson \*  
 NTG Enterprises - McDonald's \*  
 Ogletree Deakins  
 Patrick A. Russell VFW 4392 of the US Inc.  
 Pro-Legal Copies, Inc.  
 Pro-Shine  
 Remediation Resources, Inc.  
 Ritchie Bros. Auctioneers, Inc.  
 Sam's Club\*  
 Savannah Auto  
 The Savannah Bank  
 Savannah Boot Co.  
 Savannah Christian Church  
 Savannah Coca-Cola Bottling Co. \*  
 The Savannah Community Foundation



Scott & Sons Trucking  
 Seacrest Partners Inc.  
 Mr. and Mrs. Carlton Sheets

Snelling Personnel Services  
 Southern Metals Recycling, Inc.  
 State Street Bank  
 Thunderbolt Guns, LLC  
 Tony's Jons, Inc. \*  
 Tractor & Equipment Company



Trey Cantey Insurance Company  
 Triad Supply & Services, Inc  
 Villager Construction, Inc.  
 Volvo  
 Vos Electric Inc.  
 W. Eric Gladden, DMD, PC  
 Weimar Construction Co., Inc.  
 Mr. Rick Wesley  
 Women's Board of Bethesda \*  
 Yancey Brothers Co.

\* denotes in-kind donation



“The time I got to spend with the kids at Bethesda left a lasting impression on me, and that was one of admiration. These boys were seizing the opportunity Bethesda afforded them to become well-rounded young men with whom anyone would be blessed to share a classroom, an office, a friendship.”

Matt Stinchcomb

Former collegiate and NFL Offensive Lineman







“Bethesda Academy not only prepares young men to successfully pass exams and gain the credits needed to receive a high school diploma and a college acceptance. We are also providing the students a new opportunity to discover their unique talents by cultivating leadership potential beyond the classroom. It has been a treasured historical asset of our community for almost 275 years, but it is a remarkable investment opportunity for our future.”  
Cliff McCurry, Vice Chairman  
Seacrest Partners  
Bethesda Board of Governors

Bethesda Academy is extremely grateful for the annual financial support received each year. Whether donors contribute through the Annual Fund, Gateway Scholarship, memorial/honorarium gifts, or participate in our special events, the students of Bethesda are the beneficiaries. The following pages list companies and individuals whose contributions were received during the last fiscal year (July 1, 2012 - June 30, 2013). Bethesda's students, staff, and Board of Governors are thankful for this ongoing support.

## HABERSHAM SOCIETY

Named for James Habersham, a life-long friend of Rev. George Whitefield. Habersham chose Bethesda's picturesque site along the Moon River where construction began in 1740. Habersham also served as the acting governor of Georgia in the early 1770s.

### *\$50,000 and above*

Anonymous  
Louise Bowels Cunningham Trust  
Estate of Leon A. Denny, Jr.  
Mr. and Mrs. Rollin Ford  
Mr. and Mrs. Jeff Hepper  
Mr. and Mrs. Robert S. Jepson, Jr.  
Estate of Rita R. Pond

### *\$25,000 - \$49,999*

Gulfstream Aerospace Corp.  
Innomed, Inc.  
R.B. Baker Construction Co.

United Way of the Coastal Empire  
Women's Board of Bethesda

### *\$10,000 - \$24,999*

Anderson Family Foundation  
Mr. Doyle Belk  
Blanchard & Calhoun Commercial  
The Echlin Foundation

Felton Farrar Trust  
The Savannah Community Foundation  
Skidaway Island United Methodist Church

Stewart Huston Charitable Trust  
Wal-Mart Foundation  
Mr. and Mrs. Tom Webster

### *\$5,000 - \$9,999*

Robert L. Cubbedge Charitable Fund  
Dulany Industries, Inc.  
Mr. and Mrs. Samuel Everitt  
Mrs. William H. Ford, Sr.  
The Gardner Family Foundation, Inc.  
Mr. and Mrs. Neil D. Johnston  
Kiwanis Club of Skidaway

Landlovers Foundation, Inc.  
Mr. and Mrs. William T. Martin  
Mr. and Mrs. Cary D. Negley  
SunTrust Bank, Savannah  
THA Group  
Dr. and Mrs. David Tribble  
Mr. and Mrs. G. Vincent West





# PHILANTHROPY: 2012-2013

## MILLEDGE SOCIETY

\$2,500 - \$4,999

*Named for Richard Milledge, one of Bethesda's first orphans, who would later become one of the three named founding members of the Bethesda-Union Society.*

ASC Construction Equipment  
AT&T  
Brasseler USA  
Mr. and Mrs. W. L. Browning  
Mr. and Mrs. Robert D. Caswell  
Dabbs, Hickman, Hill & Cannon, LLP  
The Deen's List Charitable Fund  
Mr. and Mrs. Jim Ezell  
Flint Equipment Co.  
Ms. Joan P. Forrestel  
Mrs. Clif R. Hepper, Sr.  
Mr. and Mrs. Bob Kraft  
Kroger  
Mr. and Mrs. Kenneth N. Larsen  
OTT of Savannah, Inc.  
Ritchie Bros. Auctioneers, Inc.  
The Savannah Bank  
Savannah Tire & Rubber Co., Inc.  
Seacrest Partners Inc.  
Tractor & Equipment Company  
Villager Construction, Inc.  
Yancey Brothers Co.



Bethesda Alumni Association  
Blanchard Machinery Co.  
Blue Force Gear, Inc.  
Mr. and Mrs. Gary P. Bocard  
Mr. Ira Berman and Ms. Helen Borrello  
Bradley Foundation, Inc.  
Mr. and Mrs. Edward W. Bradley, Jr.  
Mr. and Mrs. Leon Campbell  
Maj. and Mrs. Luis Carreras  
The Cartledge Foundation, Inc.



Mrs. James Chapman  
The Coastal Bank  
Coggins Promotional Advertising, Inc.  
Dr. Edward J. Cohn  
Speedy Concrete Cutting  
Cintas Corporation  
Mr. and Mrs. Dale Critz, Sr.  
Mr. Eddie Darsey  
Ms. Andrea B. Dove  
Mr. and Mrs. Robert H. Dowe  
Mr. and Mrs. Richard D. Eckburg  
Mr. and Mrs. James K. Emery  
EnviroVac  
Evans General Contractors  
Georgia Highway Contractors Assn. Inc.  
Rev. and Mrs. James W. Giddens  
Mr. and Mrs. John Gooch  
Griffin Contracting, Inc.  
Mr. and Mrs. Robert C. Gunness  
Mr. Joseph T. Halterman  
Mrs. Margaret Haza  
Mr. and Mrs. Cliff Hepper, Jr.  
Holland, Henry & Bromley  
Hughes Public Affairs  
Isle of Hope United Methodist Church  
J.C. Lewis Foundation, Inc.  
Mrs. Mae R. Jones  
The Rev. and Mrs. George Maxwell  
Mr. and Mrs. J. Cliff McCurry  
Moffatt & Nichol

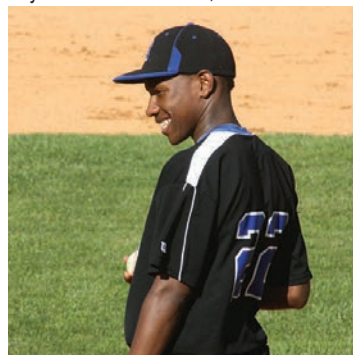
Mr. William E. Oglesby, Jr.  
Mr. and Mrs. James Pannell  
Dr. and Mrs. William S. Ray, Jr.  
Mr. Vance J. Reyes  
Mr. and Mrs. L. Allan Reynolds, Jr.  
Mr. and Mrs. Jack Romanos  
Savannah Harbor Foundation  
Scott & Sons Trucking  
Ms. Swann Seiler  
Mr. and Mrs. David L. Smith  
Snelling Personnel Services  
Mr. and Mrs. Philip Solomons, Jr.  
Southern Metals Recycling, Inc.  
Episcopal Church Women of St. John's Church  
Sweet Potatoes, Inc.  
The Pi Kappa Alpha Fraternity  
Trustees' Garden Club  
Mr. and Mrs. William H. Ulmer  
Vos Electric Inc.  
Wells Fargo  
Mr. and Mrs. Anthony V. Wilson

## TONDEE SOCIETY

\$500 - \$999

*Named for Richard Tondee, another of Bethesda's first orphans and co-founder of the Bethesda-Union Society. Tondee is also known for his place in Revolutionary War history. Tondee's Tavern was a famous meeting place for the Sons of Liberty.*

Bank of America  
Bouchillon's Collision Center, Inc.  
Caddie Master Enterprises, Inc.  
Carver State Bank  
Terracon Consultants, Inc.  
Mr. Robert F. Crowley  
Diamond Concrete Products, LLC  
Dry Creek Investments, Inc.



F & W Forestry Services, Inc.  
Mr. and Mrs. Jeff Fenstermacher  
Mr. William H. Ford, Jr.  
Georgia Surveyors Exchange Company  
Greater Works Community Church, Inc.  
The Hammond Family Foundation, Inc.  
Mr. and Mrs. Robert H. Herndon  
IBM Corporation  
Integrated Network Solutions  
Investment Performance Services, Inc.  
Isle of Hope UMC - Women's Group  
J.M. Wood Auction Co., Inc.  
The John And Emma Derst Foundation, Inc.  
JTVS Builders, Inc.  
Mrs. Dorothy Z. Kicklighter  
Kudzo Staffing  
Mr. Walter N. Lewis  
Mr. R. Henry Lightfoot  
Mr. Bernard J. Lowenthal  
M. J. Hogan & Company, Inc.  
Martin Marietta Materials  
Mrs. Toni McBride  
Mr. Samuel G. McCachern  
Mr. and Mrs. Ronald B. Medinger  
Mr. Henry H. Minis  
Mr. J Sheppard Mondy  
Morgan Stanley  
Negley, Ott & Associates, Inc.  
NTG Enterprises - McDonald's



Patrick A. Russell VFW 4392 of the US Inc.  
Mrs. Elizabeth P. Raffetto  
Remediation Resources, Inc.  
Mr. and Mrs. Michael F. Reuschling  
Savannah Christian Church  
Savannah Marriott Riverfront  
Mr. and Mrs. Carlton Sheets  
Mr. and Mrs. Dave Smith  
Mrs. Charles L. Sparkman  
State Street Bank  
Sterne, Agee & Leach, Inc.  
Ms. Mellanie Strong  
Mr. Mark M. Stublely  
Mrs. Curtis W. Tarr  
Toccoa Falls College  
Triad Supply & Services, Inc.  
Mr. and Mrs. Michael Viers  
Weimar Construction Co., Inc.  
Mr. and Mrs. Bob Weinbauer  
Mr. Rick Wesley  
Whitaker Laboratory, Inc.  
Mr. and Mrs. Walter J. Wigren  
Dr. and Mrs. Leslie L. Wilkes  
Mr. Chris Witherington

## SHEFTALL SOCIETY

\$1,000 - \$2,499

*Named for Benjamin Sheftall, who along with Richard Milledge and Peter Tondee, founded the Bethesda-Union Society. Sheftall was involved with the establishment of Congregation Mickve Israel, and actively supported Revolutionary War efforts as a member of the Savannah Parochial Committee.*

ABC Cutting Contractors, Inc.  
Aggregates USA  
APC Mabbett Transport  
AV Logistics  
Mr. and Mrs. Jim Balloun  
Ms. Kelly Benhase





## FRANKLIN SOCIETY

up to \$499

*Named for Benjamin Franklin, who famously emptied his pockets to support Bethesda upon witnessing one of Rev. George Whitefield's sermons.*

Mr. Anthony H. Abbott  
 Ms. Mary E. Adams  
 Mrs. Leopold Adler II  
 Mr. and Mrs. Jay D. Ahrens  
 Mr. and Mrs. Dale E. Akins  
 Mr. Fred Alderman  
 Mr. Walter L. Alderman  
 Mr. Robert E. Allen, Jr.  
 Mr. and Mrs. David W. Archer  
 Mr. Fred Ard  
 Autobahn Service Center  
 Ms. Jocelyn Baker  
 Mr. and Mrs. Dean Barger  
 Ms. Lani Barnes-Kircher  
 Mr. and Mrs. James Barrick  
 Bart, Meyer & Company  
 Mr. and Mrs. William J. Barton, Jr.  
 Mr. and Mrs. Tony Beasley  
 Bernard Williams & Company  
 Bernie's Too, Inc.  
 Mrs. Anna A. Betz  
 Mr. Warren N. Bimbleck  
 Mr. and Mrs. Paul Birnbaum  
 Dr. Linda Bleicken  
 Ms. Marie Boucher  
 Mr. Hoke Bouchillon  
 Mr. Troy A. Bouy  
 Mr. and Mrs. Thomas M. Boyd, Jr.  
 Mr. and Mrs. Robert E. Broderick  
 Mr. and Mrs. Thomas L. Brooks  
 Miss Elizabeth A. Brown  
 Mr. and Mrs. G. W. Brown  
 Mr. Ed Caldwell  
 Mr. Billy Carver  
 Mr. and Mrs. Steve Carver  
 The Catholic War Veterans, Inc.

Mr. and Mrs. David Charnigo  
 Ms. Katherine Chisholm  
 Mr. and Mrs. William W. Chisholm, Jr.  
 Mrs. Barbara A. Church  
 Mr. Oliver W. Clemons, Jr.  
 Mr. and Mrs. Charles R. Clos  
 Mr. and Mrs. John A. Coakley  
 Mr. and Mrs. Paul Collin  
 Mr. Malcolm Cook  
 Mr. Trey Cook  
 Mrs. William Corbin  
 Mr. and Mrs. Tom Corey  
 Mr. James Crenshaw  
 Mr. and Mrs. Scott Crenshaw  
 Ms. Lucy S. Crosswell  
 Mr. and Mrs. N. E. Culbertson  
 Mr. Benny Curl  
 LCDR R. S. Cutler, USCG (Ret.)  
 Mr. and Mrs. Clifford H. Dales  
 Mr. Joe Daniel  
 Mr. and Mrs. Asa Barnes Davis  
 Mr. E. Lee Davis  
 Mrs. Ellen T. Davis  
 Capt. Fuzzy Davis  
 Mr. Mark K. Davis  
 DC Electric Company, Inc.  
 Mr. and Mrs. Mario J. De La Guardia  
 Mrs. Thomas J. Deal  
 Mr. John Dean, Sr.  
 Mrs. Ashley K. Dearing, Jr.  
 Mr. and Mrs. John Denert  
 Mr. Jeremy D. Detwiler  
 Mr. John A. Diamond  
 Mr. and Mrs. James Dills  
 Dr. and Mrs. Keith Dimond  
 Mr. William Dipman  
 Mr. William Donahue  
 Mr. and Mrs. Richard Donnelly  
 Mr. and Mrs. F. Reed Dulany III  
 Mr. Walter J. Dumas  
 Mr. and Mrs. J. Laurence Dunn  
 Mr. and Mrs. Mitchell Dunn  
 Mr. and Mrs. Lee K. Durham  
 Mr. and Mrs. Ralph W. Eagle

Mr. and Mrs. Allan C. Ebell  
 Elizabeth F. Thompson Attorney at Law  
 Ellis, Painter, Ratterree & Adams  
 Ellis Wood Contracting  
 Ms. Joanna Ellis  
 Dr. and Mrs. Keith Ellis  
 ERA Southeast Coastal Real Estate  
 Erickson Associates, Inc.  
 Mr. and Mrs. Phil Erro  
 Mr. and Mrs. Stuart Evans  
 Dr. and Mrs. Ronald R. Fagin  
 Mr. Jody Farmer  
 Mr. Robert D. Farr  
 Mr. and Mrs. Frederick J. Ferraro  
 Mr. and Mrs. John Fesperman  
 Mr. and Mrs. Ernest Fischer  
 Ms. Joan N. Fish  
 Mr. and Mrs. David A. Fleming  
 Ms. Abigail S. Foran  
 Mr. and Mrs. Myron A. Frank  
 Mr. and Mrs. Jeff Franklin  
 Mr. and Mrs. Marc A. Fruchter  
 Mr. and Mrs. Murray A. Galin  
 Mr. and Mrs. Rick Garner  
 Mr. and Mrs. Arthur J. Gartland  
 Mr. Eddie W. George  
 George K. Gannam Unit 184,  
 American Legion Auxiliary  
 Mr. and Mrs. Arthur M. Gignilliat, Jr.  
 Mrs. Maggie Gill  
 Mr. and Mrs. William Gladden  
 Mr. Larry B. Goggins  
 Mr. and Mrs. George Grady  
 Mr. Thomas S. Gray, Jr.  
 Mr. and Mrs. Samuel D. Griffith III  
 Mr. and Mrs. George F. Groves  
 Mr. and Mrs. Bernard Grozine  
 Mr. and Mrs. Steve Hall  
 Mr. Jonathan D. Halvorsen  
 Dr. and Mrs. O. Emerson Ham, Jr.  
 Mr. Jim Hamilton  
 Mr. and Mrs. Donald E. Hare  
 Mr. and Mrs. Raymond C. Harrison, Jr.  
 Mr. J. Harry Haslam, Jr.



Ms. Linda Davis Hawk  
 Mrs. Caroline M. Hemphill  
 Mrs. Cindy Henke  
 Mr. and Mrs. Daniel Henke  
 Mrs. Rebecca Herdman  
 Mr. and Mrs. George B. Hills, Jr.  
 Ms. Tracie Hilton  
 Mr. and Mrs. Alex H. Hodges  
 Mr. Denslay E. Hoffman  
 Mr. and Mrs. John M. Hoffman  
 Mr. and Mrs. Willard R. Holland  
 Mr. Clark Honnold  
 Ms. Barbara L. Hooks  
 Mr. and Mrs. John Y. Huber III  
 Mr. Albert Hucks and Ms. Donna Williams  
 Mr. and Mrs. John W. Hudson  
 Mrs. Dale A. Hughes  
 Mr. Willie Hughes  
 Mr. John D. Hull  
 Mr. and Mrs. James E. Hungerpiller  
 Mr. James M. Hunter  
 Mr. and Mrs. O. Landis Hurley  
 Ike LaRoche & Associates  
 Mr. and Mrs. Curtis Illies  
 Mr. and Mrs. Curtis P. Ireland  
 Mr. and Mrs. George B. James  
 Mr. Mike Jarrell  
 Mr. and Mrs. Gene Jeske  
 Mr. and Mrs. Neil C. Johnson  
 Dr. and Mrs. E. A. Johnston  
 Dr. and Mrs. Thomas S. Johnston





# PHILANTHROPY: 2012-2013

Mr. and Mrs. Barry Jones  
 Mr. and Mrs. Jack M. Jones  
 Mr. and Mrs. William M. Jordan, Jr.  
 Ms. Emily Kehoe  
 Mr. and Mrs. Rob Kerdasha  
 Mrs. Drexel Kicklighter  
 Mr. Stephen O. Kilmer  
 Mr. and Mrs. C. Dean Klahr  
 Mr. and Mrs. C. George Kleeman IV  
 Mr. R. Scot Kraeuter  
 Mr. and Mrs. Donald Kunian  
 Ms. Josephine Langan  
 Mr. and Mrs. Bill Lanier  
 Mr. and Mrs. William H. Leavengood, Sr.  
 Ms. Helle Lee  
 Leonard's Metal, Inc.



Mr. and Mrs. David N. Levasseur  
 Mrs. J. C. Lewis, Jr.  
 Mrs. Deborah Lightfoot  
 Mr. and Mrs. John S. Little  
 Mrs. Helen Lynah  
 Mr. and Mrs. Johnnie M. Lynes, Jr.  
 Mr. and Mrs. Mark J. Mamalakis, Jr.  
 Mr. and Mrs. Paul Mamalakis  
 Mr. and Mrs. Gary Marsella  
 Mr. and Mrs. Murray S. Marshall  
 Mrs. Perry Smith Marshall  
 Mr. and Mrs. Robert J. McCarthy  
 Ms. Julia McDonald  
 Mr. Robert McEwen  
 Mr. and Mrs. William F. McIlrath, Sr.  
 Mr. and Mrs. Kenneth F. McKenna  
 Mr. and Mrs. Michael B. McLearn  
 Mr. Jason McMillan  
 Mrs. George J. Melford  
 Mr. Butch Miltiades  
 Mrs. Lorane H. Minis  
 Mr. J. Robert Mobley  
 Mr. and Mrs. Ernest C. Moreno  
 Ms. Dale Morgan  
 Mr. and Mrs. J. G. Morgan, Jr.  
 Mr. and Mrs. Charles H. Morris  
 Ms. Laura Morris  
 Mr. Mills Lane Morrison  
 Mr. and Mrs. Judson Moss  
 Mr. Mark D. Moss and Ms. Kimberly Miller  
 Mrs. Doris Murphy  
 Mrs. Walter B. Murphy, Jr.  
 Mr. and Mrs. Richard A. Myers  
 Mr. Mark Nathan

Mr. and Mrs. Norman F. Nelson  
 Ms. Sue Nichols  
 Mrs. Bernadette G. Nolan  
 Mr. Robert Norton  
 Nourish  
 Mr. and Mrs. Thomas O. Nowlin  
 Mr. and Mrs. Jerry P. Nusloch  
 Mrs. Sidney Nutting, Jr.  
 Ms. Pamela L. O'Quinn  
 Ms. Gail Oberg  
 Mr. George Oelschig  
 Mr. and Mrs. Robert Oenbrink  
 Mr. and Mrs. Walter O'Leary  
 Mr. Ronald E. Onorato  
 Open Door Circle, WIUMC  
 Ms. Erika Orris  
 Mr. Charles H. Ortmann  
 Mr. and Mrs. Robert A. Osborn  
 Dr. and Mrs. C. Lamont Osteen  
 Mr. John A. Pablo  
 Ms. Kathy Pacifici and  
 Mr. Michael Halligan  
 Mr. and Mrs. William R. Palmer  
 AM Peterson  
 Mr. David M. Plank  
 Mr. and Mrs. Thomas Potterfield  
 Mr. and Mrs. Irwin L. Potts, Jr.  
 Pro-Legal Copies, Inc.  
 Pro-Shine  
 Ms. Jane Pruitt  
 Mrs. IB Raae  
 Mrs. Gaye Sentell Reese  
 Mr. and Mrs. Jerry H. Reeves III  
 Mrs. Corrine Reeves  
 Mr. and Mrs. Wm. David A. Reeves  
 Mr. and Mrs. Daniel Reitman  
 Mr. and Mrs. Edwin G. Reynolds III  
 Mrs. L. Allan Reynolds  
 Ms. Debora R. Rice-Reagan  
 Mr. and Mrs. James R. Rich  
 Mrs. R. R. Richards  
 Mr. and Mrs. Alan Robertson  
 Dr. and Mrs. Lester E. Robertson, Jr.  
 Mr. and Mrs. Tom Rood  
 Mr. and Mrs. Harry T. Rosenheim III  
 Mr. and Mrs. James A. Rourke  
 Mr. Michael Salmon  
 Mr. Herman Ralph Sanford  
 Savannah Auto  
 Savannah Boot Co.  
 Mr. and Mrs. Waldron Tom Sawyer  
 Mr. and Mrs. John M. Saylor



Mrs. Eleanor B. Scarborough  
 Mr. and Mrs. Jeremy Scherer  
 Mr. W.H. Schloenbach  
 Mrs. Helen T. Sharpley  
 Mr. and Mrs. Kenneth B. Shevlin  
 Mr. Robert F. Shreve  
 Mr. William B. Shuman  
 Mr. and Mrs. Frank Simmons  
 Mr. Barry Simpson  
 Mr. Scudder Sinclair  
 Mrs. Jane Y. Smith  
 Mr. and Mrs. Mallory Smith  
 Mr. Manly R. Smith  
 Mr. and Mrs. Ned Smith  
 Ms. Imogene Snyder  
 Southeast Georgia Health System  
 Mr. Jack Spicknall  
 Mr. and Mrs. William W. Sprague, Jr.  
 Mr. and Mrs. Henry C. Stage III  
 Mr. and Mrs. George G. Staimer  
 Mr. Henry D. Stevens III  
 Mr. Henry D. Stevens IV  
 Mr. and Mrs. J. E. Stewart  
 Mr. and Mrs. Lovick P. Suddath  
 Ms. Kelli Sullivan  
 Ms. Sylvia Summers  
 Mr. Leo Sweatte  
 T. W. Erickson Foundation  
 Ms. Pam Tavormina-Edwards  
 Ms. Delbora K. Taylor  
 Mr. and Mrs. Ronald E. Teeple  
 Mr. Wayne S. Thomas  
 Thunderbolt Guns, LLC  
 Mr. Dennis Tondee  
 Ms. Antoinette L. Toney

Tony's Jons, Inc.  
 Trey Cantey Insurance Company  
 Ms. Sheila Tucker  
 Ms. Muriel Turner  
 Dr. Pat Turner  
 Mr. and Mrs. G. Victor Tutan  
 Mrs. Yvonne Tyson  
 Mr. and Mrs. Charlie VandenBulck  
 Mr. Peter S. Voss  
 W. Eric Gladden, DMD, PC



Mrs. Dorothy M. Wade  
 Mr. and Mrs. Andrew Ward  
 Mr. and Mrs. Wiley A. Wasden  
 Mr. Jesse J. Watkins  
 Mr. and Mrs. Mike Werneke  
 Mr. and Mrs. Michael J. Wilkowski  
 Mr. and Mrs. Alan S. Williams  
 Mr. and Mrs. Richard D. Williams  
 Mrs. Suzanne H. Williams  
 Mr. and Mrs. Rhett N. Willis  
 Mr. and Mrs. Randolph K. Wilson, Sr.  
 Mr. and Mrs. Shack Wimbish, Jr.  
 Ms. J. Lynn Wolfe  
 Mr. W. Michael Womble  
 Mr. William C. Woodcock  
 Mr. and Mrs. John C. Wyll, Jr.  
 Ms. Ann Yingling  
 Mrs. Elizabeth L. Yingling  
 Mr. and Mrs. Robert L. Zerbe  
 Ms. Mary Zittrouer

Bethesda Academy has made every effort to ensure the accuracy of this report. We sincerely apologize for any errors or omissions and ask that you contact us at 912.644.4376 with corrections.





# PHILANTHROPY: 2013 GOAL SCHOLARSHIP PROGRAM



“It has been a blessing being a student here at Bethesda Academy. I want to thank the Lord for allowing me to make that transition from the public school to here. I just thank Bethesda so much. It has allowed me to reach my full potential...and I'm just so thankful.”  
*Henry Brown, Class of 2013*  
 GOAL Scholarship recipient

The companies and individuals below made the choice to turn their Georgia taxes into scholarships during the 2012-2013 fiscal year. These participants helped fund GOAL Scholarships for more than 60 qualifying Bethesda Academy students during the 2012-2013 academic year.

The statewide cap for the qualified education tax credit was met in May 2013 and, with the popularity of this tax credit, the projection is that the cap may be reached within the 1st quarter of 2014. GOAL Scholarships have had a tremendous impact on our students, as well as the overall financial aid program at Bethesda Academy. Many taxpayers were too late to participate in 2013, so we encourage you to submit your 2014 application as soon as possible. Simply visit [www.BethesdaAcademy.org](http://www.BethesdaAcademy.org) or [www.goalscholarship.org](http://www.goalscholarship.org) to learn how.

Mr. Michael Ackner and  
 Ms. Caitlin Smith  
 Mr. James Anderson  
 Mr. and Mrs. David Angell  
 Mr. and Mrs. Richard Arb  
 Mr. and Mrs. Joseph Barnard II  
 Mr. and Mrs. Loren Beals  
 Mr. and Mrs. John Beasley  
 Mr. Henry Bell  
 Mr. and Mrs. William Bennison  
 Mr. Ira Berman and Ms. Helen Borrello  
 Mr. and Mrs. Denis Blackburne  
 Mr. and Mrs. Eugene Bloom  
 Mr. and Mrs. Gary Bocard  
 Mr. and Mrs. Daniel Boone, Jr.  
 Mr. and Mrs. Ben Brian, Jr.  
 Ms. Elizabeth Brown  
 Ms. Kelly Burke  
 Mr. and Mrs. Charles Carter  
 Mr. and Mrs. Raymond Cartledge  
 Mr. and Mrs. John Clinard  
 Mr. and Mrs. John Coakley III  
 Mr. and Mrs. Robert Contino  
 Mr. and Mrs. Hurley Cook III  
 Mr. and Mrs. Hurley Cook, Jr.  
 Mr. and Mrs. Robert Cordasco  
 Mrs. Susan Craddock  
 Mr. and Mrs. Henry Croci  
 Mr. Brian Dean and  
 Ms. Sarah Lasseter  
 Mr. and Mrs. Clifford DeVan  
 Ms. Andrea Dove  
 Mr. and Mrs. Robert Doyle  
 Mr. and Mrs. John Dunn  
 Mr. Michael Eckmann  
 Dr. and Mrs. Keith Ellis

Mr. and Mrs. Samuel Everitt  
 Mr. William Ewbank  
 Mr. and Mrs. Kurt Faxon  
 Mr. and Mrs. Geoffrey Fenstermacher  
 Mr. and Mrs. Edgar Field  
 Mr. and Mrs. Clarke Field, Jr.  
 Mr. and Mrs. John Fishburne  
 Dr. Marianne Fleming and  
 Mr. T. Mills Fleming  
 Mr. and Mrs. Samuel Gallagher  
 Mr. and Mrs. Arthur Gignilliat, Jr.  
 Mr. and Mrs. Rick Gowthrop  
 Mr. and Mrs. Alexander Grady  
 Ms. Ellen Grimm  
 Mr. and Mrs. David Grosse  
 Mr. Gregory Grosse  
 Mr. and Mrs. Cyrus Harden III  
 Mr. Stephen Harris  
 Mr. and Mrs. John Harrison  
 Mr. and Mrs. William Heald  
 Dr. Melanie Helmken and  
 Mr. John Helmken  
 Mr. and Mrs. Edwin Hill  
 Mr. and Mrs. Willard Holland  
 Mr. and Mrs. Lee Hooper  
 Mr. and Mrs. Richard Hoover  
 Mr. and Mrs. Darrell Kim Huffman  
 Mr. and Mrs. Gary Hughes  
 Mr. and Mrs. Craig Hull, Jr.  
 Mr. and Mrs. Rodger Johnson  
 Dr. Patricia Lee June  
 Mr. and Mrs. Robert Kerdasha  
 Mrs. Dorothy Kicklighter  
 Mr. and Mrs. Keith Kilgore  
 Mr. and Mrs. John Kleine  
 Mr. and Mrs. Robert Kraft

Mr. and Mrs. Wayne Kuhn  
 Ms. Teresa Longworth  
 Mr. and Mrs. Ted Lynch  
 Mr. and Mrs. Thomas Mackle  
 Mr. and Mrs. William Martin  
 Mrs. Antoinette McBride  
 Mr. and Mrs. Francis McCarthy  
 Mr. and Mrs. Cliff McCurry, Sr.  
 Mr. and Mrs. Joseph McGowan  
 Mr. and Mrs. Dean McKay  
 Mr. and Mrs. William McNellis  
 Mr. and Mrs. Ronald Medinger  
 Mr. and Mrs. Jack Meeker  
 Ms. Caroline Monroe  
 Mr. and Mrs. William Monroe  
 Mr. and Mrs. Timothy Mooney  
 Mr. and Mrs. G. Philip Morgan III  
 Ms. Jane Nangle  
 Mr. and Mrs. Ali Nasr  
 Mr. and Mrs. Robert Nickels  
 Mr. and Mrs. Roger Nord  
 Mr. and Mrs. Barbara Paull  
 Mr. and Mrs. George Pellingier  
 Mr. and Mrs. William Peterson  
 Ms. Joan Pierce  
 Mr. Frank Powell Jr.  
 Dr. and Mrs. Paul Pressly  
 Dr. and Mrs. William Ray  
 Mr. and Mrs. Joseph Reese, Jr.  
 Mr. and Mrs. Roy Richard  
 Mr. and Mrs. Randall Roulier  
 Ms. Kristin Russell  
 Ms. Cecelia Seiler  
 Mr. and Mrs. William Shanahan  
 Mr. and Mrs. William Shaw, Jr.  
 Mr. Kerry Shay

Mrs. Elizabeth Skeadas  
 Mr. David Smith  
 Mr. and Mrs. Douglas Spadaro  
 Mrs. Charles Sparkman  
 Mr. and Mrs. Howard Stryker  
 Mr. and Mrs. Marcus Tate  
 Mr. and Mrs. John Telgener  
 Mr. and Mrs. Jack Tesinsky  
 Dr. and Mrs. Thomas Tribble  
 Mr. and Mrs. Philip Turek  
 Mr. and Mrs. Antwain Turner  
 Dr. Patricia Turner  
 Mr. and Mrs. William Ulmer  
 Mr. and Mrs. Kent Urness  
 Mr. and Mrs. Terry Warfield  
 Mr. and Mrs. Wiley Wasden III  
 Mr. and Mrs. Don Waters  
 Ms. Sue Wettengel  
 Mr. Albert Wieners  
 Mr. and Mrs. Robert Wight  
 Dr. and Mrs. Leslie Wilkes  
 Mr. and Mrs. William Wright  
 Ms. Mary Yarbrough  
 Mr. and Mrs. William Yost  
 Mr. and Mrs. Joe Young

For more information about the GOAL Scholarship Program, please contact Andrea Dove at 912.644.4376 or [andrea.dove@bethesdaacademy.org](mailto:andrea.dove@bethesdaacademy.org).





A group of young Black students in school uniforms, smiling and looking towards the right. The students are wearing white shirts and blue and yellow striped ties. The background is a warm, orange-toned wall.

Thank you for supporting  
Bethesda Academy!





School Office	912.351.2055
Admissions	912.351.2068
President's Office	912.351.2061
Development Office	912.644.4376

[www.BethesdaAcademy.org](http://www.BethesdaAcademy.org)

cover image by Clarus Photography





9520 FERGUSON AVENUE | SAVANNAH, GA 31406  
P.O. BOX 13039 | SAVANNAH, GA 31416  
[WWW.BETHESDAACADEMY.ORG](http://WWW.BETHESDAACADEMY.ORG)