



BETHESDA ACADEMY
2015-2016 ANNUAL REPORT

2015-2016 Board of Governors

Officers

John Helmken, Chairman
Trey Cook, Vice-Chairman
Cliff McCurry, Secretary
Mike Viers, Treasurer

Ellen Bolch
Ryan Chandler
Diane Ingram
Kevin Jackson
Michael Kaigler
Joe Marinelli
Quentin Marlin
Ted Moore
Kathy Pacifici
Paul Pressly
Jim Trolinger

Ex-officio

Alva Compton President
The Women's Board of Bethesda
David Tribble, President
Bethesda Academy

About the cover:

During Bethesda's 275th anniversary year, the beloved Whitefield Chapel celebrated its own Centennial anniversary. To honor this campus treasure, the cover image of the Whitefield Chapel was created using photographs from the 2015-16 academic year. Cover design by Gary Byrd, Bethesda Class of 2008.

"Cooperation accomplishes wonderful results, and it produced a jewel in the construction of the Whitefield Chapel, begun in 1916 and dedicated in 1925. Burrough's good angel in this case was Mrs. W. L. Wilson of the Women's Board, who also happened to be the President of the National Society of Colonial Dames. Through her mediation, the Colonial Dames presented the chapel to Bethesda as their gift. The simple, dignified, meeting-house style designed by Albert Simons of Charleston would have pleased George Whitefield in whose memory it was dedicated on Anniversary Day 1925. The architect used All Hallows Church at Snow Hill, Maryland, built in 1748 as his model. The beautiful stained glass window, fabricated by Willet Studio of Philadelphia, was contributed by Mrs. Clarence Anderson and Mrs. J. A. P. Crisfield of Philadelphia, descendants of James Habersham in honor of their ancestor, Bethesda's co-founder. The window is a replica of one in the Carthusian Church near Florence. Flourishing unconsumed, the burning bush symbolizes Bethesda, once even described by Whitefield in that way. The Willet Company did the windows in the Military Chapel at West Point, the Princeton Theological Seminary, and other nationally significant places. Mrs. Craig Barrow contributed the pulpit in memory of Noble Jones, her forebear. Mrs. Bullard donated the altar to the honor of John Wesley, while the Georgia Society of Colonial Wars gave the pews."

Excerpt from Beloved Bethesda, by Edward J. Cashin, Ph.D.



LEADERSHIP

- Letters to the Community.....2
- Academic Accomplishments.....5
- Spiritual Development.....7
- Athletic Achievements.....8



ENTREPRENEURSHIP

- Campus & Community Internships.....10
- Exploratory Classes.....12
- Career Exploration.....14



SUSTAINABILITY

- Financial Report.....15
- Bethesda Partners.....16
- Campus Sustainability.....17
- Special Events.....19
- Philanthropy.....22

FROM THE BOARD OF GOVERNORS



We are proud to present this Annual Report in celebration of many the successes and accomplishments of Bethesda Academy's students during the 2015-2016 academic year. It is a privilege to serve alongside Bethesda's dedicated staff and support these incredible young men. Personally, it was a great honor to serve with Dr. David Tribble during his 25th and final year at the helm of Bethesda. In the spring of 2015, David announced his retirement, giving us more than a full year to search for Bethesda's new leader, but also enough time to thoughtfully and strategically look to Bethesda's future. We were able to leverage David's 25 years of advancing the organization from a boys' home to an accredited school with impressive outcomes into the framework of a strategic plan – a visionary baton to pass on to the next leader.

A small steering committee comprised of Board members and Bethesda's leadership staff spent the better part of a year working with Ian Symmonds & Associates, Inc. to identify our organizational strengths, the practices that set Bethesda apart from other educational institutions, and an honest reflection of where we can improve. The process included soliciting feedback and perspective from staff, donors, parents, students, and at-large community members. The vision came together and, in the fall of 2015, we officially launched *Lead the Way* as our plan for Bethesda. In conjunction with our founding values, "a love of God, a love of learning, and a strong work ethic", Bethesda will establish a dedicated focus on Leadership, Entrepreneurship, and Sustainability. *Lead the Way* outlines strategies to infuse those practices throughout our curriculum and you will note that even this Annual Report is presented through those three lenses.

Our focus on leadership, entrepreneurship, and sustainability was officially adopted by the Board of Governors at the beginning of the 2015-16 fiscal year, the Search Committee for Bethesda's new President was formed and Carney, Sandoe & Associates, an executive search firm for independent schools, was retained to assist in the search. After reviewing many potential candidates, four finalists visited Savannah for an intensive interview process with the committee, additional Board members, and the leadership staff. The clear choice for us was Dr. H. Michael Hughes.

With a dense military and academic background defined by numerous awards of achievement and success, Dr. Hughes has served in key leadership and academic positions at the University of Virginia, University of North Carolina at Chapel Hill and West Point, as well as several headmaster positions in schools across the United States. We were fortunate that Dr. Hughes was able to make a few visits to Savannah between February and May. This was instrumental in creating a smooth transition, as Mike was able to spend time directly with David, the leadership team, and the Board. We look forward to welcoming Mike and his wife, Donna, to the Bethesda family. We invite you to learn more about Dr. Hughes by visiting Bethesda's website: www.BethesdaAcademy.org.

As we move forward with this beloved organization to which David Tribble was unwaveringly committed, we are excited to have found such a worthy successor in Mike Hughes. During any time of transition, however, financial stability is absolutely essential. Whether Annual Fund, Gateway Scholarship, GOAL Scholarship, or supporting our annual Sporting Clays and Scholarship Gala events, all funds raised are vital to Bethesda. Your investment – our community's investment – directly impacts the ability for families to offer the Bethesda experience to their son. Reading through this Annual Report, I trust you will see the power of that impact, the blessing of having the "Bethesda choice" right here in Savannah, and the possibilities for success that arise when young men are granted an opportunity "to discover their academic, social, and spiritual potential."

A handwritten signature in blue ink, reading "John C. Helmken II".

John C. Helmken II,
Chairman, Board of Governors





The genesis of the idea of Bethesda was born a very long time ago by a man named Whitefield. He desired a place of safety and a haven for orphans in the colonial days of the 1740's. From his founding spirit and vision to today, young men have come to Bethesda often not even aware of what they are seeking. The stories are powerful but real...often confused and disorganized, but within the heart of each young man there lies a promise of something better for them to aspire to and attain. Bethesda Academy is more than a school. The school is the wrapper around which daily functions emanate. But Bethesda has been and will continue to be an idea grounded in core values, "A Love of God, a Love of Learning, and a Strong Work Ethic". These values form both the wisdom that sustains this institution, and the hope going forward for each young man so that regardless of their questions as they entered Bethesda, they can now begin to form answers.

The 2015-2016 school year was a microcosm of results that point to some of the answers that our young men are discovering. We can start with the results of our senior class as all 20 young men were accepted into college and higher education. On aggregate, 60 college acceptance letters were received among these 20 young men, so clearly they were armed with options and choices as they made their first steps beyond this campus. On the athletic front, the hard work and perseverance of our teams resulted in both Blazer football and basketball teams making it all the way to state championship games. Even in defeat, it was obvious that their hard work had inspired them to a place where finishing second will serve as another springboard for opportunities to exceed and succeed. Our campus internships continued to develop, giving our students more and more opportunities to express leadership and entrepreneurship. Test scores showed continuing improvement, and even in a rebuilding year, the Bethesda Chess Team marched impressively forward with several highly placed finishes in regional matches. For our students, what do these results point toward? I think it should be clear. Our young men are preparing for futures grounded in values, inspired by learning, and supported by determination and a strong work ethic.

We took steps to launch *Lead the Way*, which calls us to build on the original idea of Bethesda, while adding training in leadership and entrepreneurship within our student body. This will strengthen the capacities of our students as they develop their own answers in an increasingly complex world.

In closing, much like our 2015-2016 senior class, I too graduated from Bethesda at the close of the academic year just past. For 25 years, the privilege to work with so many young boys and young men has been my passion. I have seen many changes, many challenges, and many wonderful breakthrough moments. I want to thank our staff members, board members, many friends and donors, who have walked this journey with me and experienced these many wonderful breakthroughs. In my retirement, the Board of Governors chose Dr. Michael Hughes to lead our strategic plan and the continuing growth and development of Bethesda Academy. Dr. Hughes is the right man for this next critical stage of Bethesda's amazing history. In my heart, I will forever be a Bethesda Blazer. Thank you for the opportunity to lead, and may God bless Bethesda, our students, our staff, and all those who stand with Bethesda Academy.

Always a Blazer!

A handwritten signature in black ink, appearing to read "T. David Tribble".

T. David Tribble, D.Min.
President 1991 - 2016



FROM THE DIRECTOR OF DEVELOPMENT & MARKETING



What a year! During our 275th anniversary year, we announced our vision for Bethesda's future, as well as the retirement of Dr. David Tribble. It was important to Dr. Tribble and the leadership team to have strong sense of where we wanted to go as an educational institution. This would provide greater organizational focus, as well as help the Search Committee identify the skill set needed by our new President. "Lead the Way" was launched during the 2015-16 year. It is an ambitious plan requiring significant investment in infrastructure, curriculum, staffing, marketing – and the list goes on. However we have to consider Bethesda's financial reality: tuition still only drives approximately 10% of our annual budget. On average, most private schools' tuition revenue is approximately 80%. That means the majority of private schools use their annual giving and special event revenues to bridge the tuition gap, invest in improvements, or purchase items from their wish list.

Bethesda has to raise money every year simply to keep the doors open...a *lot* of money. After tuition income and revenue from the endowment, we still have to come up with strategies to find about 60% of our budget – to the tune of more than \$2.1 million. *Every year.* We have become incredibly creative in finding ways to leverage what we have into revenue streams through the Wildlife Sanctuary & Preserve, Campus Rentals, Farm & Garden, and Cattle & Beef, which collectively contribute approximately \$1 million. That still leaves a revenue need of more than \$1 million that must be raised through philanthropic efforts. *Every year.* And, again, that is simply to maintain.

Maintain? When you supported Bethesda's efforts to "maintain" during this last year, what exactly did that mean? What did your money do?

- You funded a school of impact – for our students, their families, and even our staff.
- You strengthened a young man's self-confidence.
- You provided a young man with a strong academic support system.
- You challenged a young man to learn about a farm, a garden, livestock, and chickens.
- You created an opportunity for a young man find new "brothers" within our boarding program.
- You gave a student-athlete a chance to compete at the State Championship level.
- You inspired a young man to lead Chapel worship through song.

For 118 young men, you opened new doors of possibility, encouraged safe risk-taking, and stretched goals. We hope you truly understand the significance of "maintaining" Bethesda. At Bethesda, "maintaining" can often be defined as "live changing" for our students.

Yet, we know that if a school is going to thrive, it cannot stand still. Today, schools of impact are created when staff, volunteer leadership, and families have the ability to recognize growth opportunities and the courage to adapt; when they have the collective wisdom and foresight to anticipate change and the faith to embrace it.

We are not the Bethesda of old – whether you interpret old as 200 years ago, 50 years ago, or even 5 years ago. But we most certainly "maintain" our position as a place of powerful impact and opportunity for our students. Your past support has made it so and your renewed commitment will allow us to continue. Not only has it been my honor to solicit financial support for Bethesda's mission and our students; it has been sheer joy to photograph, document, promote, and celebrate the successes of this past year.

I sincerely thank you for your partnership and look forward to your future investment as we boldly commit to "Lead the Way".

With Blazer gratitude,

Andrea Dove
Director of Development & Marketing



FROM THE PRINCIPAL - ACADEMIC SUCCESSES

As I reflect on the 2015-2016 school year, several things come to mind: we celebrated our 275th Anniversary and our place in Savannah's history, our continued presence as a dynamic school, another successful year on the fields and courts, achievement of academic plans and goals, development of leadership opportunities, and expansion of the work internship program. There was much to celebrate!

But the most inspiring part of the school year was the success of our 20 graduating seniors. In the end, all 20 seniors earned acceptance into college - and I mean *earned!* Through late nights, early mornings, tutorials, setting *and* meeting deadlines, they earned every one of the 60 college acceptance letters they received. I applaud our graduates and their families, as we all recognize that reaching this milestone is the result of years of ground work from the students and their support systems.



The college acceptance letters affirmed the efforts of parents and family members who went above and beyond to push their son towards success. The letters also validated the many financial sacrifices families made to enroll their sons at Bethesda Academy. The college acceptance letters were confirmation to all the teachers that the time and energy spent motivating these young men to meet their high expectations in the classroom was successful. It is my hope that those college acceptances - doors of higher education opened to another group of young men - served as a powerful "return on investment" for donors who contributed to Bethesda Academy's mission.

All this success did not happen by accident. It was a very methodical process. Teachers studied rigorous curriculum and found unique ways to make young men understand it at deeper levels. In addition to AP British Literature, we added AP Environmental Science to the 2015-16 schedule - and each AP class had 14 students. Teachers volunteered their free time to tutor students as they prepared to take the ever-important SAT and ACT exams. Teachers also used data from classroom assessments and ACT Aspire standardized testing to adjust teaching and learning. Coaches put academics first by allowing students to do homework and attend tutorials before attending practice and games. Parents sent their sons to school prepared and ready for learning. Parents also supported the efforts of the teachers by expecting their son to put their best effort into everyday. Our donors believed in the mission and trusted the Bethesda Academy staff to use the resources they provided us to enhance instruction and add rigor to the classroom.

Our 275th year was a year of new heights: academically, athletically, and historically - and even personally, as I was graced with a group dance and serenade in the dining hall on my birthday! I now look forward to the 2016-17 academic year and accept the challenge of surpassing the success reflected in this report.

With great Blazer pride,

A handwritten signature in cursive script that reads "Megan".

Megan Kicklighter
Principal



2016 COMMENCEMENT



The best way to celebrate our academic leadership is with Graduation. The Class of 2016 was as competitive in the classroom as they were on the athletic fields. Faculty members led the class on the Reflection Walk to highlight values instilled and the journey traveled together. One of the more recent traditions of the graduates' Reflection Walk included presenting the junior class with their own black school shirts, which signified that the juniors were rising to the senior student leadership of Bethesda Academy. It proved to be a great moment between friends, classmates, workmates, and teammates, filled with hugs, handshakes and much pride from both groups of young men.

The 2016 Commencement Ceremony took place in the Lady Huntingdon Amphitheater, where more than 400 people were gathered to celebrate the academic milestone of these 20 young men. The Valedictorian, Corey Evans, and Salutatorian, Byron Gray, gave their respective addresses. Diplomas were presented by Dr. David Tribble, Principal Megan Kicklighter, Assistant Principal Karleen Brown, and Board Chairman John Helmken. Bethesda Alumni Association President, Mr. Walt Cason, presented Bibles to each graduate. Each graduate was given the opportunity to stand at the podium to publicly share their thoughts, reflections, and gratitude. It was a proud day for all!



According to Psalm 133, Oh how good and pleasant it is for brethren to dwell together in unity! And that is exactly what we did we began our year with a school wide prayer at the flag pole in front of the school with parents, students, faculty and staff. Our focus during the 2015-16 year was to encourage more student-led worship in our weekly Chapel Service. We were very fortunate to witness students leading prayer, songs, and even dance!

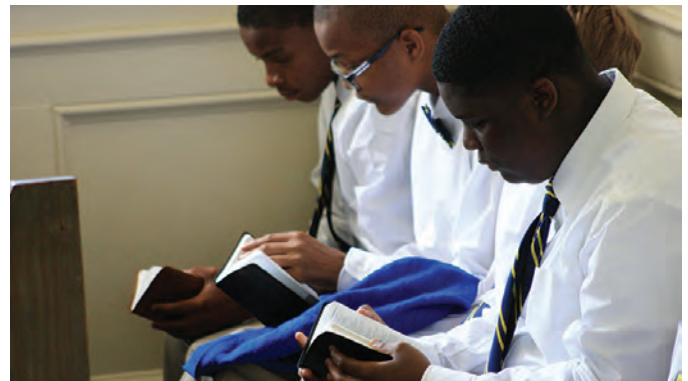
In keeping with our long lasting mission to teach a Love of God, we began asking the question: "what do we want students to know"? We want students to know the scriptures, which reveal God's love for us and our responsibility to love God and others. As a result, we continued using our Love of God Curriculum on campus with our nine themes from First Corinthians Chapter 13. This year, our spiritual development program consisted of weekly Chapel services, cottage bible studies, Fellowship of Christian Athletes (FCA), and other special worship services. Separate weekly chapel services were held for our middle school and high school students, to insure the discussion would be directed to the age and maturity of the students in attendance. Once a month, however, we held Convocation Tuesday Chapel Service where we engaged in prayer, song, and a devotional message from Dr. Tribble. At that service, we served Holy Communion to the students and staff.

We offered FCA (Fellowship of Christian Athletes) as a weekly exploratory class this year. During FCA, we were able to offer devotional thoughts using sports related messages, news articles, and more to encourage our athletes spiritually. We attended FCA Football Camp at Georgia Southern, where we had eighteen students to make decisions for Jesus Christ. What an amazing camp to witness athletes from different schools competing against one another and worshipping together! There was a particularly powerful moment during our football season. When starting senior Corey Evans sustained a season-ending leg injury during the playoff game that would elevate us to the State Championship Game, every athlete from Bethesda and Florence Christian cleared the sidelines to form a circle of prayer around Corey and his mom before the EMTs placed him in the ambulance. It was truly special and a blessing to witness.

During our weekly cottage bible studies we worked through the book entitled, "The Two Minute Drill to Manhood" by John Croyle. We also showed two movies to our students living on campus: "Son of God" and "God is Not Dead". We concluded our year with seven students making decisions to receive Jesus Christ and others with a stronger desire to grow spiritually. This year we decided to have a Homecoming Worship service with our players and parents to kick off the Homecoming Week festivities. We were blessed in song by one of our students, Calvin Ford.

At end the year, we had a special prayer for Dr. David and Lynn Tribble and following week we had a corporate prayer for all seniors and parents in their last chapel service as a student of Bethesda Academy. What an amazing year of God's amazing Grace!

Thank you for your continued prayers,
Antwain Turner
 Chaplain



BLAZER ATHLETICS

Leadership was demonstrated by our student-athletes throughout the year, our upperclassmen in particular. It was not simply what they did on the court or on the field, it was how they handled themselves in the weight room, at practice, and in the homework room. It was how they handled themselves in the height of victory and in the throws of defeat.

The older Blazers were great mentors and role models for the younger Blazers. Team captains set high expectations for themselves, as well as the rest of the team. They enforced team rules and policies, led practice and game warm-ups, and facilitated an environment of true teamwork and accountability. Because of their commitment, focus, and dedication, many of our student-athletes were recognized locally, regionally, and at the state level.

Blazer Varsity Football:

2015 State Runner-Up

2015 SCISA All State: Corey Evans, Jared Gandy, Carl Middleton, and Tre'von Pray

2015 SCISA All-Star Game: Zackary Askew, Jared Gandy, Javetti Higgenbottom, O'Shea Hightower, Carl Middleton, and Joshua Woodley

2015 SCISA Player-of-the-Year Award: Tre'von Pray

2015 SCISA Offensive Player of the Year: Corey Evans

2015 Savannah Morning News First Team: Tre'von Pray (RB), and Carl Middleton (DE)

Blazer Middle School Football:

2015 SCISA Champions

Blazer Bowling:

2015-16 SCISA Tournament All State Honors: Sean Carter and Ian Carter

Blazer Varsity Basketball*:

2015-16 SCISA State Runner-Up (27-4 season)

Kearston Berksteiner: 1,000 points (high school career)

Avery Joyner: 1,000 points (high school career)

2015-16 SCISA All Region: Zackary Askew, Kearson Berksteiner, Avery Joyner, Josh Woodley

2015-16 SCISA All State: Zackary Askew, Kearson Berksteiner, Avery Joyner, Jameek Murphy, Josh Woodley

Blazer Middle School Basketball:

2015-16 SPAL Champions (16-1 season)

Blazer Track & Field**:

2015-16 SCISA State Meet: 3rd Place (Team)

Long Jump - State Champion: Avery Joyner

High Jump - State Champion: Avery Joyner

200m - State Champion: Kearston Berksteiner

400m - 2nd place: Kearston Berksteiner

4x100 Relay - State Champions:

Kearston Berksteiner, Avery Joyner, Tyler Marcus, and Tre'von Pray

Blazer Strength and Conditioning:

SCISA State Competition:

Nick Brown, 1st place (130 and below division)

Marcus Johnson, 1st place (151-160 division)

**during the last 10 years, Blazers Basketball has won an average of 93% of our games and made 8 appearances in the State Championship Game.*

***Bethesda Track & Field has been the State Champions for both the 4x100 and the Long Jump for 4 consecutive years.*





Berksteiner, Joyner set to lead Bethesda on another playoff run

BY DENNIS KNIGHT

912-652-0329
dennis.knight@savannahnow.com

In his seven years coaching at Bethesda Academy, Clevon Thompson has had some prolific scorers — including Ben Carter, who eclipsed 2,000 points in his career to set a school record.

But Thompson knows he has a special squad this season as the Blazers start the defense of their SCISA Class AA state title when they face Robert E. Lee Academy in a first-round game at Pinewood Prep in Summerville, S.C., Saturday at 7 p.m.

Senior Avery Joyner passed the 1,000-point mark earlier in the season, and his classmate Kearston Berksteiner reached the milestone in a win over Hilton Head Prep



Kearston Berksteiner, left, and Avery Joyner are seniors on a Bethesda Academy team shooting for its second consecutive SCISA state title. (Dennis Knight/Savannah Morning News)

last year, but we have some younger players this season. We're going to try to guide them to the championship."

Joyner missed three weeks of the season in December with an ankle injury, and he wants to end his high school career on a high note.

"I think if we continue to be dedicated and work hard, we can get to the same place we were last year," Joyner said. "We need to stay focused on our defense."

Thompson likes his team's chances with his seniors leading the way.

"They know how to run our offensive system," Thompson said of the duo. "When they were younger, they had upperclassmen who set a great example of the right way to do things. Now they know what is expected of them as contributors — that

other one is going to be," Thompson said. "They have that uncommon ability to feed off each other and set the other one up."

After starting the season 2-6, the Blazers (21-7) have reeled off 19 wins in their last 20 games to earn the No. 1 seed in the SCISA Class AA state tournament.

Berksteiner is averaging 14.9 points and 3.7 assists per game, while Joyner averages 14.3 points and three assists. Zack Askew (10 ppg), Jamek Murphy (8.1 ppg) and Josh Woodley (6.4 ppg) have also been key contributors for the Blazers.

Berksteiner and Joyner are determined to lead the team on another deep playoff run.

"Coach does a great job working with us in practice, and he also helps us become men off the court," Berk-

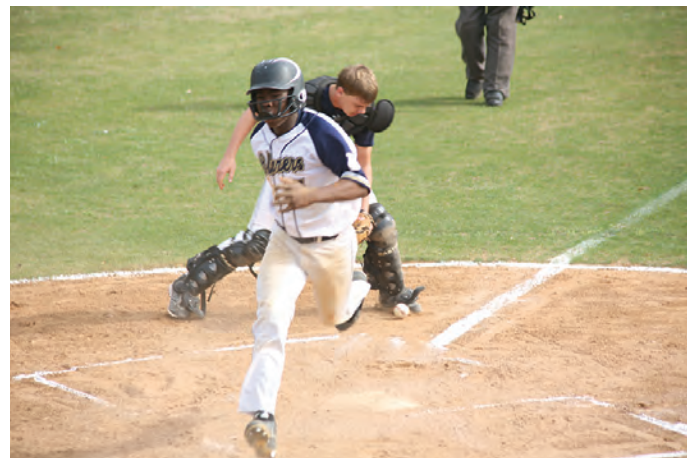
steiner said. "Coach does a great job working with us in practice, and he also helps us become men off the court," Berk-

steiner said. "Coach does a great job working with us in practice, and he also helps us become men off the court," Berk-

steiner said. "Coach does a great job working with us in practice, and he also helps us become men off the court," Berk-

steiner said. "Coach does a great job working with us in practice, and he also helps us become men off the court," Berk-

steiner said. "Coach does a great job working with us in practice, and he also helps us become men off the court," Berk-





SOUTH STATE BANK CENTER FOR YOUNG ENTREPRENEURS

The “Lead the Way” vision included a better defined plan for how we engage our high school students around the principles of work and entrepreneurship within the larger scope of leadership. During the 2015-16 year, the 81 high school students were assigned to an internship for a semester. Some students discovered a talent in a certain area and requested to remain in an internship for the entire year.

Bethesda’s internships are not a “work program”, but a thoughtful and purposeful curriculum enhancement used to underscore our strong work ethic value. For one class period each day, students reported to their campus internship and were expected to complete the jobs and tasks assigned by their work Mentor. Students were expected to master the skills required to perform the duties, as well as demonstrate improved soft skills required in any workplace. Students were graded weekly on behaviors such as timeliness, respectfulness, initiative, focus, positive attitude toward authority, and leadership. Any negative behaviors were also documented on the rubric - including uniform violations. Students were held accountable, as Internship grades were included on report cards.

Within the variety of internship opportunities, students learned that some were directly revenue generating and some were not. Taking care of the chickens and careful collection of eggs had a direct impact on the financial returns of the weekly Farm Stand. Being personable and helpful during quail hunts and pheasant shoots resulted in members and participants who wanted to come back to the Wildlife Sanctuary & Preserve. Working with Maintenance to keep the campus clean and presentable resulted in corporate and private venue rentals. Working on food preparation and cleaning the Dining Hall after lunch helped keep organizational costs down and ensured a pleasant dining experience for their classmates. Whether the internship produced direct or indirect revenue, students learned that *everyone* is a customer and customer service matters.





CAMPUS AND COMMUNITY INTERNSHIPS

During the 2015-16 academic year, one of our seniors participated in an external internship with Marine Logistics Education Taskforce (MLET), which provides companies the opportunity to cultivate their workforce by introducing students to careers in maritime and logistics. Students receive on-the-job training, work experience, and the opportunity to demonstrate their skills and abilities to possible employers. MLET has proven to be a wonderful opportunity, as well as a resume-builder with solid work experience and possible references for future employment. Our student's experience was extremely positive and he decided to pursue a college path toward a career in logistics.

The Farm and Garden student interns collected eggs and planted and harvested herbs and vegetables for the weekly Farm Stand, however a few of the boarding students saw the Farm Stand as a way to raise extra money for their cottage activities. The day before the Farm Stand, the Alumni Cottage boarders would make baked goods to sell. What they didn't sell at the Farm Stand was often sold to faculty, staff, and students the next day. What a great learning opportunity and initiative by the students!

Two of the students participating in Coach Katy Margeson's Sports Medicine Internship used a conference day (an academic holiday with the exception of the parent-teacher-student conference) to shadow orthopedic physicians at Chatham Orthopaedics. Both students were already interested in sports medicine as a career, but the day spent observing physicians, physician assistants, and staff made them even more excited about their chosen field of study. Special thanks to Coach Katy and the gracious group at Chatham Orthopaedics Associates, who welcomed our students and provided a wonderful learning opportunity.





EXPLORATORY CLASSES

Exploratory Classes are unique elective opportunities established by teachers. Our faculty members determined what classes they wanted to offer students and students were able to choose the class that most appealed to them. During the 2015-16 academic year, classes ranged from Yearbook to Gaming (programming), Chess to Fellowship of Christian Athletes, and Outdoor Club to Theater, and a few others.

One exploratory offered was "Reading the Wall Street Journal." Bethesda received both digital and print WSJ subscriptions for each student participating for the semester. Weekly, the students would choose something they had read in WSJ to discuss. The class also discussed corporations, how they are structured legally and how they are owned. The idea was to learn what it means to be a shareholder and how to purchase shares in a company. The stock market game by GCEE (GA Council on Economic Education - www.gcee.org) allowed students to research companies, purchase shares of stock with virtual money, and monitor portfolio performance. The group also studied Warren Buffet: his career, thought processes, and investment philosophy.

Students in the Fiber Arts exploratory learned three techniques to handcraft items using various types of yarn. Knitting hats using a loom was by far the most popular project. Although students primarily made these to keep for themselves, a few were made to give as gifts to family members or friends. Faculty members were so impressed with the quality of the hats that one placed a custom order with a student and purchased a hat. Students also learned the technique of finger knitting and created beautiful infinity scarves which were given as gifts to family and friends, girlfriends, or teachers and other staff members of Bethesda. Although crocheting was the most difficult technique to learn, one student learned and perfected it quickly. After being taught the basics in class, he watched YouTube videos to find patterns for the projects he wanted to create. He crocheted beautiful hats as gifts for his mom and a teacher as well as the most adorable little stuffed animal.





EXPLORATORY CLASSES

The Chess Team met as an exploratory class and performed well last year with several members attending tournaments in Brunswick and other competition venues. Most of our team placed in the top three at each tournament with Chance Carroll taking top honors in one of the tournaments. The team learned a lot about the different strategies involved in playing chess at a higher level. The team looks forward to growing and returning to competition in sanctioned tournaments.

It was an exciting day when one of Savannah's most famous entrepreneurs, Ms. Paula Deen, was on campus with her magazine production team! Ms. Deen chose to feature Bethesda in the annual "Savannah" issue of *Cooking with Paula Deen*. During the course of the day of interviews and photo ops with the chickens and the weekly Farm Stand, Ms. Deen and was gracious enough to visit the Fiber Arts class and pose for a few candid photos with students. As always, it was high energy fun with Paula on campus.





CAREER EXPLORATION

A Career Fair was held on campus for Bethesda's upperclassmen. There were presentations by professionals from a variety of industries. Speakers included insurance executive Chip Compton, lawyer and Bethesda Board of Governors member Quentin Marlin, Executive Chef Jamal Pryor from The Landings Oakridge Club, and U.S. Army's SSG Andrew Peter. The students were invited to ask questions and encouraged to dialogue with the presenters. The Women's Board of Bethesda members helping at this event included Libby Kingston, Stephanie Carson, Meredith Dulany, Susan Verell and Alva Compton.

Hunter Army Airfield welcomed 30 Bethesda students, along with teachers and WBOB members for an exciting and interesting tour which included a visit to the flight line, small arms experience, and lunch. Students were able to climb in and on helicopters and simulate a medic evacuation. The small arms experience featured instruction and small arms practice with encouragement and critiques. Students had the opportunity to talk with soldiers during lunch at the HAAF cafeteria. It was a wonderful way for the students to learn more about the US Army, but also show our appreciation for our local military.

A group of Bethesda students were also participants with Xcel, which is a mentoring network for young men. Seasoned mentors volunteer with students through a strategic progression of training, advisement, and job placement. To become part of the Xcel network, students were required to complete six weeks of training. The young men then received opportunities to interview for various internships, apprenticeships, and full-time employment. Opportunities were primarily offered in trades important to Savannah industries, such as welding, utilities, mechanics, and logistics. Xcel continued to be a great resource for our students during the 2015-16 year.

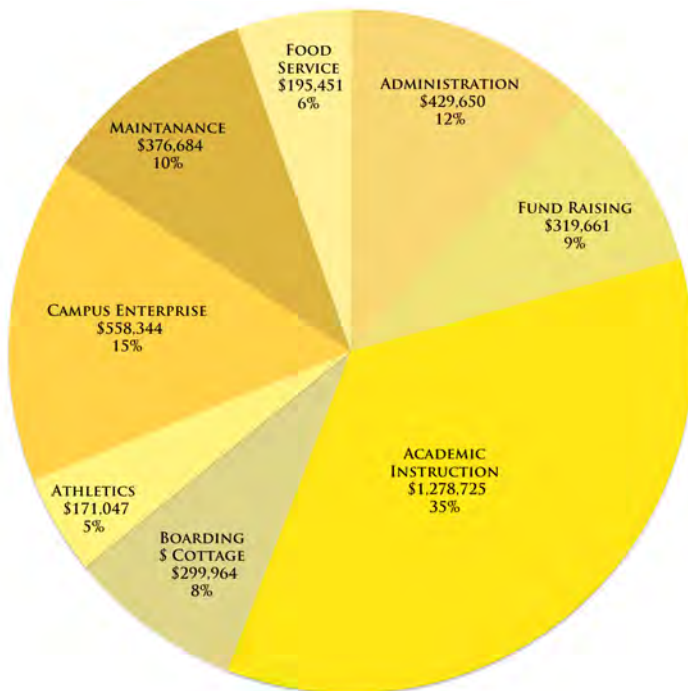


Financial Summary June 30, 2016 (unaudited)

The Board of Governors, Finance Committee, Endowment Trust Committee, and staff were actively engaged in the preparation and review of the 2015-16 budget to ensure financial sustainability. With continued fundraising efforts, careful spending, and prudent use of our line of credit, Bethesda Academy continued to operate with accountability and efficiency. Bethesda also received an annual independent audit, and was given an unqualified audit opinion.

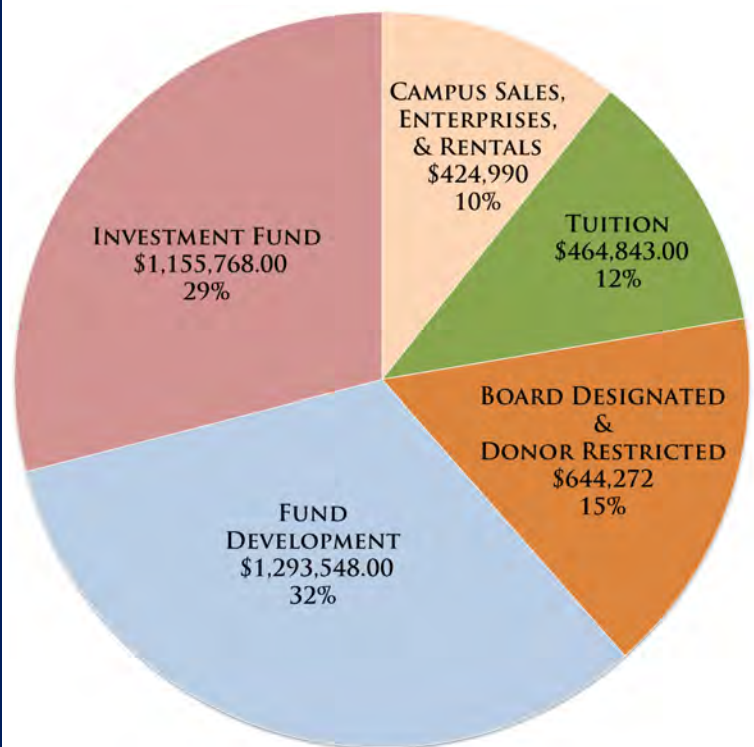
It is important to remember that tuition revenues represented only 12% of the operating budget of the school. Bethesda Academy maintained a generous financial aid program and, as a result, every student received tuition support through financial aid. The majority of the awards were made possible through our annual endowment disbursement and contributions received through Annual Fund, Gateway Scholarship, Georgia GOAL Scholarship, and Special Events. Bethesda continued to grow the 275 Fund, which was structured to receive outright gifts, estate plans, and other creative strategies to support the continuing promotion of Bethesda Academy's mission to educate young men in spite of limited financial resources. Moving forward, the 275 Fund will support our Lead the Way initiative, on-going capital projects to support the growth of new classrooms, dormitories, and equipment replacement needs, as well as financial aid.

Expenses



Salaries and Benefits are included in the respective cost center.
Salaries and Benefits totaled \$2,233,296 (62%) of the expense budget.

Revenue



Fund Development Detail

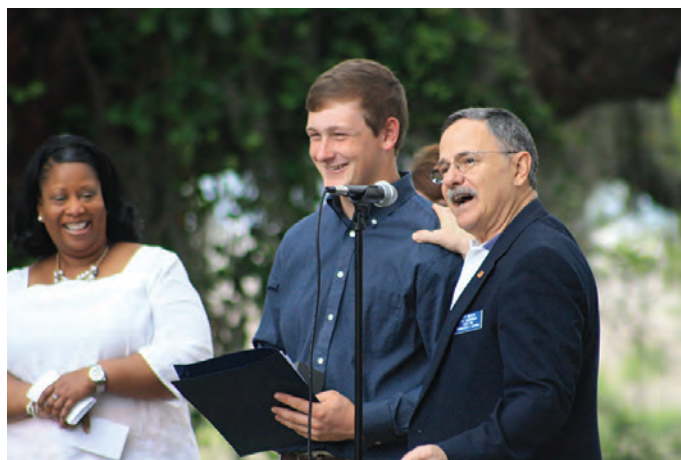


* reflects areas that include restricted/donor designated funds

The financial sustainability of Bethesda Academy again relied on community support throughout the year. The Women's Board of Bethesda (WBOB) and the Bethesda Alumni Association, along with other partners, helped Bethesda make great strides during the 2015-16 fiscal and academic year. By holding various fundraisers during the year, these partners provided much needed funding for capital needs, including transportation and technology improvements, as well as underwriting mosquito treatments for our athletic fields, awards for essay contests, and custom-fitted sport coats from John B. Rourke for the senior class. Members of the WBOB and the Alumni Association were also great spectators for Blazer Athletics!

Many Alumni came back to Bethesda to celebrate Anniversary Day in April. The Bethesda Board of Governors held their Annual Meeting, then the student awards program took place in the Lady Huntington Amphitheater. The Award Ceremony was followed by the Alumni - Student Softball Game and lunch for all in the Diamond Dining Hall.

The Women's Board of Bethesda hosted the 4th Annual Yates-Astro Resolution Race 5k in January. The trail run was held on Bethesda's campus. The race has become a favorite among runners and walkers alike, because of the uniqueness of the course. The Blazers were well represented by the many members of staff and students who participated or volunteered.



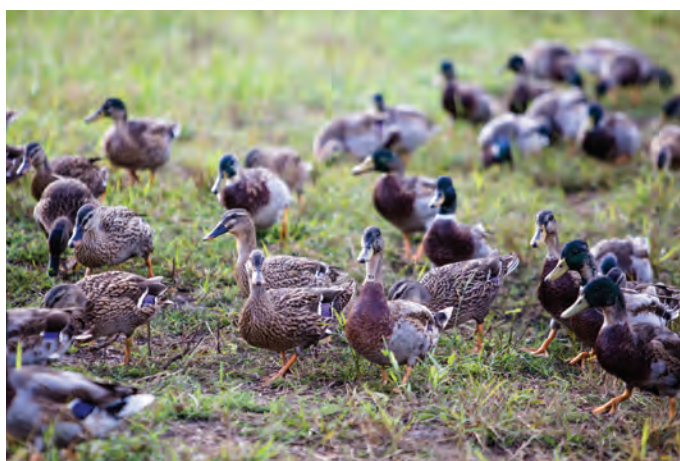


During the 2015-16 year, Bethesda used significant resources to improve the bodies of water on the Wildlife Sanctuary & Preserve. Water provides a diverse aqua-culture as well as a water source for all species of animals. Both the 70 acre lake and 3 acre pond were fertilized to promote the growth of algae and plants, which supports the lower levels of the food chain. The 3 acre pond was transformed into a roost pond for 1,250 mallards. A fence was built around the pond to help protect the young ducks from predators. The ducks also served a specific purpose as their organic waste naturally fertilizes the pond and promotes fish growth. The ducks were incrementally fed to the 70 acre lake, which became “home” and continued the natural fertilization process.

Several small water holes were dug, which were used to provide water for all animals and cooling areas for our hunting dogs. Time was also spent cleaning the many ditches from fallen debris. Smooth water flow minimized flooding, provided another water source, and eliminated standing/stagnant water.

There has been an ongoing focus on providing food sources, bedding areas, travel corridors, and safe havens for all animals. This was managed through control burning and selective application of herbicides. Over 20 acres of the WS&P were planted with brown top millet, milo, winter wheat, and rye grass to assist with this focus. The WS&P selectively topped over 80 acres of the natural grasses growing on the Preserve. This process was done by raising the height of a cutting apparatus and cutting off the seed pods as they blossom, which dropped the seeds on the ground and provided a food source.

As the WS&P is an upland hunting business, staff and WS&P student interns worked to maintain an aesthetically pleasing environment for members and their guests. Therefore, a majority of labor hours were spent cutting trails, maintaining trails, maintaining firebreaks, removing unsightly debris, cutting up down trees, and removing dangerous thickets.





Bethesda Farm & Gardens continued building an operation which maintains the integrity of natural systems and seeks to enhance the natural world and create healthy bodies and informed eaters. Student interns were vital to farm and garden operations, but the students also took ownership and embraced the hard work that comes with each day on the farm.

Our animals are treated with care rather than indifference or disregard, and those practices were recognized when Bethesda's Beef & Cattle Program received its GAP Certification. Our students learned to handle animals with authority even when the task was to simply guide a goat up to the milking stand. Students learned to relate to and respect that creature. Often, it meant overcoming fear of a strange animal (with horns!) and learning to treat that creature with gentlemanly regard. What a transferable skill and a valuable personal asset.

Bethesda also partnered with Coastal Wildscapes, a local nonprofit dedicated to educating people about the vital role of native plant species and the crucial importance of healthy pollinator populations in coastal Georgia. Our students collaborated on a service project during the spring and installed over 600 native plants at an educational demonstration garden in Midway, GA.

Under the direction of the Georgia Department of Natural Resources, students planted seeds and successfully cultivated 400 native plant starts to install on campus and make them available to local gardeners. Through the Farm & Garden, written educational information on native plants and the role of pollinators was distributed through the weekly farm stand and public outreach events. There was also a partnership with the Forest Service and Georgia to remove invasive Chinese Tallow trees around the Bethesda Campus and we continued making fish emulsion fertilizer from scraps from the UGA Aquarium as a lesson on nutrient cycling, carbon imprint and resourceful conservation.





Special events continued to be an important component of Bethesda's financial sustainability. Our annual Sporting Clays tournament was held in November 2015 at Forest City Gun Club. Participants enjoyed a pre-shoot wild game lunch, prepared by Chef Kirk Blaine. The shooters then enjoyed a great afternoon on the course, while Bethesda students worked as trappers. The post-shoot reception took place while scores were tabulated. Special thanks to Forest City Gun Club, event sponsors, and the participants.





The 2016 Scholarship Gala was held on the marsh side of campus, in Bynuh's Field - while the cattle grazed in the next pasture. On the eve of graduation, hundreds of people gathered to celebrate Bethesda's Class of 2016 and their families and to listen to the incomparable Mr. Derrick Moore, the Developmental Coach & Chaplain for the Georgia Institute of Technology. Mr. Moore was even more energetic, passionate, and dynamic than all the viral pre-game videos posted online from the GA Tech locker room. His incredibly powerful message revolved about being "extraordinary" was actually extraordinary - and even inspired a few "Amen's" from the guests. It was truly a special night for the soon-to-be graduates and an honor for us to honor them.

Gala photography by John Alexander





SPECIAL EVENT SPONSORS, PATRONS, AND PARTNERS

Ameris Bank
 Armstrong University
 Anonymous
 SunTrust Banks
 Bart, Meyer & Company
 Bethesda Alumni Association
 Chef Kirk Blaine
 and Blaine Management *
 Blanchard & Calhoun Commercial
 Dr. and Mrs. Sidney J. Bolch III
 Bouchillon's Collision Center, Inc.
 Brasseler USA
 Cardiology Associates of Vidalia, P.C.
 The Cartledge Foundation, Inc.
 Mr. and Mrs. William W. Chisholm, Jr.
 Dabbs Hickman Hill & Cannon
 Donnelly Yachts
 Guerry Lumber Co.
 Evans General Contractors
 Mr. and Mrs. Trey Cook

Coomer, Coomer & Routhier, P.C.
 Mr. and Mrs. Dale Critz, Sr.
 Mr. and Mrs. Mario J. De La Guardia
 Diamond Concrete Products, LLC
 DIRT
 Doug Bean Signs *
 Dulany Industries, Inc.
 Gavilon Fertilizer
 Georgia Power Company
 GiGi's Cupcakes *
 Great Dane Trailers
 Great Harvest Bread Company *
 Dr. Melanie Helmken
 and Mr. John C. Helmken II
 Holland, Henry & Bromley
 Hunter Maclean
 Hyatt Regency Savannah *
 International Paper
 JAG International
 JCB, Inc.

JTVS Builders, Inc.
 Mr. and Mrs. Michael Kaigler
 Karp, Ronning & Tindol, PC
 The Kennickell Group *
 Kroger
 M3 Advisors / Todd Martin
 Mr. and Mrs. Ben MacMillan
 MacAljon
 Memorial Health
 Mingledorff's
 Mr. and Mrs. William J. Monroe
 Morgan Stanley / Sam Gallagher
 Myrick Marine
 Pro-Shine
 Dorsey Trailer Sales
 Savannah Coca-Cola Bottling Co. *
 Savannah Distributing Company *
 Savannah Special Events by Ranco *
 Seacrest Partners Inc.
 Ms. Swann Seiler

Mr. and Mrs. Carlton Sheets
 Mr. Jackson Sherrill
 Mr. and Mrs. Frank Simmons
 Simon's Formal Wear *
 Mr. and Mrs. Mark V. Smith
 South State Bank
 Stage Front Presentation Systems *
 State Street Global Advisors
 THA Group
 The Mosquito Authority *
 Thomas & Hutton
 Thomas J. Sheehan Insurance, Inc.
 Dr. and Mrs. David Tribble
 United Community Bank
 Dr. and Mrs. Jules Victor III
 W. Eric Gladden, DMD, PC
 Mr. and Mrs. Leslie L. Wilkes III

* denotes in-kind donation





THE GIVING SOCIETIES OF BETHESDA

Habersham Society: James Habersham was a life-long friend of Reverend George Whitefield and chose Bethesda's picturesque site along the Moon River in 1740. Habersham served as the acting Governor of Georgia in the early 1770's.

Milledge Society: Richard Milledge, one of the three named founding members of the Bethesda-Union Society.

Sheftall Society: Benjamin Sheftall, co-founder of the Bethesda-Union Society. Sheftall was involved with the establishment of Congregation Mickve Israel, and actively supported Revolutionary War efforts.

Tondee Society: Richard Tondee, co-founder of the Bethesda-Union Society. Tondee is also known for his place in Revolutionary War history. Tondee's Tavern was a famous meeting place for the Sons of Liberty.

Franklin Society: Benjamin Franklin, who famously emptied his pockets to support Bethesda upon witnessing a Whitefield sermon.

Bethesda Academy is extremely grateful for the financial support we receive each year. Whether donors contribute through the Annual Fund, Gateway Scholarship, memorial/honorarium gifts, or participate in our special events, the students of Bethesda are the beneficiaries. Our students, staff, and Board of Governors are thankful for the ongoing support of the following companies and individuals whose contributions were received during the 2015-16 fiscal year (July 1, 2015 - June 30, 2016).

HABERSHAM SOCIETY

\$100,000 and above

George M Flanagan Estate

Mrs. Mary Ellen Yarbrough

\$50,000 - \$99,999

Anonymous
Louise Bowels Cunningham Trust

United Way of the Coastal Empire
Women's Board Of Bethesda

\$25,000 - \$49,999

The Echlin Foundation
Felton Farrar Trust

Gulfstream Aerospace Corp.
Estate of Joan Texada Ryan

Mr. and Mrs. Gerald D. Stephens
Mr. and Mrs. James Trolinger

\$10,000 - \$24,999

Anderson Family Foundation
AT&T
Dr. and Mrs. Sidney Jefferson Bolch III
The Monford D. and Lucy L. Custer Foundation

Innomed, Inc.
Mr. and Mrs. R. Kevin Jackson
Mr. and Mrs. Robert S. Jepson, Jr.
The Randolph Company

Skidaway Island United Methodist Church
South State Bank
Mrs. Charles L. Sparkman

\$5,000 - \$9,999

Mr. Jay Andrews
Bank of America Matching Gifts
Blanchard & Calhoun Commercial
Joan S. & Charles W. Coker Foundation
Mr. and Mrs. Trey Cook
Mr. and Mrs. Samuel Everitt
Dr. Melanie Helmken & Mr. John Helmken

Mr. and Mrs. Elliot R. Ingram III
Mr. and Mrs. Neil D. Johnston
Kroger
Mrs. Toni McBride
Monroe Welfare Foundation
Mr. and Mrs. G. Mike. Odum, Jr.
Mr. and Mrs. Edward Ruby

The Savannah Community Foundation
Society of Colonial Wars in the State of GA
Southern States Educational Foundation
Thomas H. Adams Foundation
Dr. and Mrs. David Tribble
Mr. and Mrs. Tom Webster

MILLEDGE SOCIETY

\$2,500 - \$4,999

Mr. Drew Ambos
Mr. Hal Ambos
Mr. Henry R. Bell
Bethesda Alumni Association
Brasseler USA
Mr. Michael J. Carbo
The Cartledge Foundation, Inc.
Mr. and Mrs. Robert D. Caswell
Chatham Orthopaedics
Mr. Mark F. Coffey
Diamond Concrete Products, LLC
DIRTT
Mr. and Mrs. F. Reed Dulany III
Dulany Industries, Inc.
Ms. Joan P. Forrestel
Dr. and Mrs. John George
Mr. and Mrs. Brent Harlander
Mr. Brian Harlander
Mr. George Henry
Dr. Rusty Hightower
2 H Holding
Dr. Tom Horn
Dr. Brandon Hunter
The Pi Kappa Alpha Fraternity
Mr. Hal Lyons
Mr. and Mrs. Thomas Mackle
DeMott Management
Mr. Samuel G. McCachern
Mr. and Mrs. J. Cliff McCurry
Memorial Health Gregg M. Miller
Mingledorff's
Mr. Henry H. Minis
Dr. and Mrs. William T. Moore
Ms. Kathy Pacifici
Savannah Distributing Company, Inc.
Mr. and Mrs. Jeff Scott
Seacrest Partners Inc.
Stuart F. Sligh, Jr. Memorial Foundation
Martin R. Sullivan
Thomas & Hutton

SHEFTALL SOCIETY

\$1,000 - \$2,499

Ameris Bank
Armstrong University
Mr. and Mrs. William D. Bennison
Ms. Elizabeth L. Blake
Mr. Ira Berman and Ms. Helen Borrello
Bouchillon's Collision Center, Inc.
Mr. and Mrs. Daniel H. Bradley
Mr. and Mrs. Edward W. Bradley, Jr.
Mr. and Mrs. W.L. Browning
Dabbs Hickman Hill & Cannon
Ms. Candace Carpenter
Mr. Jeffrey Casey
Mr. and Mrs. Ryan Chandler
Christ Church Savannah



Guerry Lumber Co.
Dr. Edward J. Cohn
Colonial Group, Inc.
Mr. and Mrs. Charles B. Compton, Jr.
Evans General Contractors
Mr. and Mrs. Trey Cook
Mr. and Mrs. Dale Critz, Sr.
Mr. Christopher J. Cutter
Mr. and Mrs. Mario J. De La Guardia
Donnelly Yachts
Ms. Caitlin L. Dorne
Mr. William W. Faulk
Mr. and Mrs. Jason B. Ford
Mrs. William H. Ford, Sr.
Major and Mrs. Lance Freeman
The Gardner Family Foundation, Inc.
Gavilon Fertilizer
Georgia Power Company
Mr. and Mrs. Floyd H. Gillenwater
Mr. Bradley J. Hadwin
Ms. Courtney Hahn
Mr. and Mrs. H. Paul Hamilton
Mr. and Mrs. William H. Heald
Mr. James M. Heidt, III
Mr. and Mrs. Cliff Hepper, Jr.
Mr. William Huffman
Hunter Maclean
Isle of Hope United Methodist Church
J.C. Lewis Foundation, Inc.
JCB, Inc.
Mr. Jason Jue
Mr. and Mrs. Michael Kaigler
Mr. Ronald Kronowitz
Landlovers Foundation, Inc.
Lanier-Goodman Foundation
Mr. and Mrs. John G. Lientz
Mr. R. Henry Lightfoot



Bates and Catherine Lovett
William H. and Susan Lovett
M3 Advisors
Mr. and Mrs. William T. Martin
The Rev. and Mrs. George Maxwell
Dr. Alston J. McCaslin
Mr. Jamie McCurry
Morgan Stanley
Ms. Erin K. Murray
Mr. John J. Neely
Ms. Paula Norman
Mr. and Mrs. Hubert K. O'Bannon
OECI Corporation
Dr. John D. Paletta
Mr. and Mrs. James Pannell
The Parker Companies
Ms. Beth Perdue
Mr. and Mrs. William L. Peterson
Dr. and Mrs. Paul M. Pressly
Mr. David Prout
Mr. and Mrs. L. Allan Reynolds, Jr.
Mr. Todd A. Robinson
Savannah Adult Baseball League
Savannah Christian Church
Savannah Newcomers



TONDEE SOCIETY

\$500 - \$999

Ms. Nancy Backus
Ms. Kimberly Baskin
Mr. Gus H. Bell III
Blue Force Gear, Inc.
Col. George W. Bowen
Mr. Timothy S. Cameron
Mr. Charlie Compton
Ms. Marie Crisler



Savannah Pilots Association
Screven Bancshares, Inc.
SunTrust Banks
Thomas J. Sheehan Insurance
Mr. and Mrs. Carlton Sheets
Ms. Barbara Singer
Dr. and Mrs. Alan E. Smith
Mr. and Mrs. Philip Solomons, Jr.
Mr. Henry Stevens
Ms. Isabelle D. Tapley
Thunderbolt Guns, LLC
Mr. Brad Tuttle
United Community Bank
Mr. and Mrs. Michael Viers
Mr. Mike Wachowitz
Mr. and Mrs. Glenn E. Wallace, Jr.
Mr. and Mrs. Don Waters
Mr. Matt West
Mr. and Mrs. Anthony V. Wilson
Mr. Harry L. Woolley, Jr.

Mr. and Mrs. Robert H. Dowe
The Dunn Foundation
ECW of St. John's Church
The Landings Garden Club
Ms. Denise Godfrey
Ms. Ashley Gould
Mr. and Mrs. Donald E. Hare
Ms. Lesley Herrington
Holland, Henry & Bromley
Mr. and Mrs. Curtis Illies
JAG International
Mr. Walter N. Lewis
Mr. and Mrs. Ben MacMillan
William and Kimberly McLeod
Ms. Linda Mitchell
Mr. and Mrs. William J. Monroe
Mrs. Archibald Morris
Mr. Mills Lane Morrison
Mrs. Walter B. Murphy, Jr.
Myrick Marine
Mr. Keith Pynn
Mrs. Elizabeth P. Raffetto
Mr. and Mrs. Michael F. Reuschling



Mr. and Mrs. James R. Rich
Savannah Airport Commission
Ms. Swann Seiler
Mrs. Charles Henry Sipple IV
Mr. and Mrs. Mark V. Smith
Mrs. William W. Sprague, Jr.
Mr. Gustavo M. Urzua
Dr. and Mrs. Jules Victor III
Drs. Will and Heather Wallace
Mr. and Mrs. Robert H. Weinbauer
Mr. and Mrs. Leslie L. Wilkes III
Mr. and Mrs. Robert L. Zerbe

FRANKLIN SOCIETY

up to \$499

Mr. Anthony H. Abbott
Dr. Steve and Montie Acuff
Akins and Bobb Motors
Ms. Jennifer L. Alexander
Mr. Robert E. Allen, Jr.
Mrs. Ann Altman
Mr. and Mrs. Roberto O. Alvarez
Mr. and Mrs. Andy Anderson, Jr.
Ms. Viki S. Annand
Mr. Fred Ard
Mr. and Mrs. Nick Arredondo
Mr. Paul H. Bacon
Mr. Rudy Bairas
Ms. Viola Bairas

D. B. Baker
Mr. and Mrs. Joe Barnard
Bart, Meyer & Company
Ms. Carol T. Barton
Mr. Donnie Ray Bazemore
Ms. April Bearden
Ms. Lucille Behr
Ms. Kelly Benhase
Mr. and Mrs. Julius Bennett
Mrs. Bettye Berksteiner
Bernard Williams & Company
Mr. Warren N. Bimblick
Dr. Nancy V. Bland
Dr. Gloria Borrello
Ms. Mary Lou Bowers
Dale and Donna Boyles
Mr. Raymond Brady
Mr. Ronald G. Brooks
Mr. and Mrs. Thomas L. Brooks
Ms. Karleen Brown
Ms. Velore Y. Brown
Mr. and Mrs. John Burger
Malcolm and Julia Butler
Mrs. David A. Byck III
Cardiology Associates of Vidalia, P.C.
Mr. Ralph Carpenter
Mr. and Mrs. Dan Carter
Mr. Walt W. Cason
Cason's Auto Service
Mr. and Mrs. Christopher Cay
Mr. and Mrs. David Charnigo

Mr. and Mrs. William W. Chisholm, Jr.
Mrs. Althea Clark
Ms. Carol Clary
Mr. Barry Coarsey
Colonial Dames
Mrs. Sally Connelly
Coomer, Coomer & Routhier, P.C.
Mrs. William Corbin
Mr. Nicholas Couch
Mr. and Mrs. N. E. Culbertson
Curtis V. Cooper Primary Health Care
Ms. Rosemary A. Cutuli
Mr. Barry Danckert
Mr. Dallas Daniel
Mr. and Mrs. Don Dasher
Ms. Kay G Deffley
Ms. Emily W. DeLoach
Ms. Nancy A. Dugan
Ms. Nicole Duncan
Ms. Jan F. Durham
Mr. and Mrs. Lee K. Durham
Eagle Repair of Savannah
Ms. Jerrica Edmonds
Ms. Paula C. Edmunds
Elizabeth F. Thompson Attorney at Law
Ms. Betsy Elliott
Ms. Joanna Ellis
Mr. and Mrs. Mehmet F. Ergul
Mr. and Mrs. E. Robert Ernest
William and Robin Ernest
Mr. and Mrs. Phil Erro
Mr. and Mrs. Stuart Evans
Mr. Robert D. Farr
Mr. and Mrs. Edwin J. Feiler, Jr.
Mr. and Mrs. Jeff Fenstermacher
Mr. and Mrs. Chris Ferguson
Mrs. Gloria Brack-Ford
and Mr. Calvin L. Ford
Mr. and Mrs. Robert Ford
Mr. Michael Foster
Mr. and Mrs. Myron A. Frank
Mr. and Mrs. Jeff Franklin
Ms. Janet A. Frazier
Rachel and Douglas Frey

Mr. and Mrs. Murray A. Galin
Ms. Gail Garcia
Mr. Nelson Gassman
Ms. Elizabeth R. Gilbert
Mr. and Mrs. Paul Gilmour
Dr. Theodora Gongaware
Mr. Thomas S. Gray, Jr.
Great Dane Trailers
Ms. Katherine Green
Greenline Architecture
Mr. and Mrs. Samuel D. Griffith III
Mr. and Mrs. George F. Groves
Mr. and Mrs. Alfred Guindi
Ms. Susan Gunby
Mr. and Mrs. Robert C. Gunness
Ms. Rebecca Morris Hadwin
Mr. and Mrs. Jerome F. Haggerty
Mr. Glenn Hagin
Dr. and Mrs. O. Emerson Ham, Jr.
Ms. Phyllis G. Hardeman
Mrs. Peggy Hedeman



Mrs. Clif R. Hepper, Sr.
Ms. Darcy Hightower
Ms. Janice Hildenbrand
Ms. Carol Hobbs
Mr. and Mrs. John M. Hoffman
Mr. and Mrs. Robert A. Hope
Dr. and Mrs. H. Michael Hughes
The Huntingdon Club
Independent Investment Services, LLC
Mr. and Mrs. Geoff Ingham





Mr. and Mrs. Curtis P. Ireland
Mr. G. Brock Johnson
Mr. Robert L. Johnson
Mr. and Mrs. William M. Jordan, Jr.
JTVS Builders, Inc.
Ms. Carolyn R. Keck
Mr. and Mrs. Jim Kelly
Ms. Susan M. Ketchum
Mrs. Megan Kicklighter
Mr. and Mrs. C. Dean Klahr
Mr. and Mrs. Wayne D. Kuhn
Steve and Laurie Lammert
Ms. Josephine Langan



Randy and Beth Lavercombe
Dianne and Gregory Lawhorne
Mr. Paul Lentz
Mr. and Mrs. Christian Lewis
Mr. and Mrs. John S. Little
Ms. Lucy T. Little
Mrs. Teresa G. Longworth
Debbie and Gabriella Loomis
Thomas and Karen Luke
Mr. Jim Lutton
Mr. and Mrs. Johnnie M. Lynes, Jr.
MacAljon
Little River Marina
Mr. and Mrs. Gary Marsella
Mr. David Martin
Ms. Leslie A. Mathews
Mr. and Mrs. Robert J. McCarthy
Ms. Elizabeth A. McCloot
Ms. Susan McCullough
Ms. Julia McDonald
Ms. Monica McGoldrick
McKim & Creed
Mr. and Mrs. Michael B. McLearn
Ms. Sara Jane Melford
Ms. Linda P. Meyer
Mr. Butch Miltiades
Mr. and Mrs. Alan Mitchell

Mr. and Mrs. Lou Molettieri
Mr. and Mrs. W. James Montgomery
Mr. and Mrs. J. G. Morgan, Jr.
Dr. and Mrs. Morgan W. Murray
Mr. and Mrs. Richard A. Myers
Negley, Ott & Associates, Inc.
Mr. Sylvaine B. Neises
Mr. Winoa Ng
Ms. Sue Nichols
Mr. Robin Noll
Mrs. Sidney Nutting, Jr.
Ms. Patti O'Donnell
Ms. Janet L. Oliver
S. Bruce O'Neal, DDS
Mr. Ronald E. Onorato
Ms. Jhonna L. Orebaugh
Mr. and Mrs. William R. Palmer
Mr. P. Perkowski
Mr. and Mrs. James E. Perryman
A M Peterson
Mr. David M. Plank
Mr. J. Raymond Poss
Mr. and Mrs. Thomas Potterfield
Mrs. Catherine B. Potts
Ms. Bonnie A. Powers
Pro-Shine
Mr. and Mrs. Michael Przybyl
Publix Super Market Charities
Mr. John Rabun
Mr. and Mrs. Wm. David A. Reeves
Mr. and Mrs. Daniel Reitman
Ms. Kristen Richard
Mr. and Mrs. William Richards
Ms. Moniqua L. Roberts
Ms. Erin Rollins
Dr. and Mrs. Daniel W. Rose



Ms. Irene Rudolph
Ms. Deborah J. Ryysylainen
Ms. Miquel Saeed
Dorsey Trailer Sales
Ms. Laura Lee Samford
Ms. Gabrielle Sapp
Ms. Cheryl A. Saunders
Savannah Area Chamber of Commerce
Savannah Chatham County

Christian Women's Club
The Savannah Church of God
Savannah State University
Mr. and Mrs. Raymond C. Sawyer
Mr. and Mrs. Robert A. Sawyer
Mr. and Mrs. Waldron Tom Sawyer
Ms. Erica Scales
Mr. and Mrs. Eric T. Schwarze
Mr. and Mrs. John C. Sewell
Mrs. Helen T. Sharpley
Mr. Jackson Sherrill
Mrs. H. William Shockley
Mr. and Mrs. Frank Simmons
Mrs. Brandi Hebron-Simpson
Simpsonwood United Methodist Women
Mr. and Mrs. Scudder Sinclair
Ms. Leah M. Singletary
Mr. and Mrs. John Skeadas
Mr. John F. Sleeman
Mr. and Mrs. Channing S. Smith, Jr.
Mr. and Mrs. David L. Smith
Mr. and Mrs. P. David Smith
Ms. Evelyn Smith
Mrs. Jane Y. Smith
Ms. Mary Ann Smith
Ms. Natrellia Smith
Mr. and Mrs. Daniel P. Snope
South Georgia Lawn Management
Mrs. John T. Spicknall
St. Thomas Episcopal Church
Mr. and Mrs. George G. Staimer
Dr. James and Ellen Stanbury
State Street Global Advisors
Mr. Samuel B. Strang
Mr. and Mrs. Lovick P. Suddath
Mr. and Mrs. Harry Sugden
Ms. Jaime Sullivan
Ms. Kelli Sullivan
SunTrust Foundation
Ms. Barbara A. Szycher

Ms. Barbara Tanenbaum
Target Stores
Mrs. Susan Tarver
Ms. Delbora K. Taylor
Mr. and Mrs. Don P. Teague
Mrs. Nancy Thomas
Mr. Dennis Tondee
Ms. Jo A. Trippie
Ms. Mary M. Tritch
Ms. Grace M. Trolinger
Rev. and Mrs. Antwain Turner
Ms. Muriel Turner



The Ulmer Foundation
United Way Suncoast
Ms. Peggy G. Utley
Mr. and Mrs. William B. Verell
John and Gail Vergoz
Mr. Frederick R. Viles
Visit Savannah
W. Eric Gladden, DMD, PC
Mr. Jamie Weaver
Ms. Kate G. Westra
Mr. and Mrs. John R. Wetherbee
Ms. Mary Wetherington
Dr. and Mrs. Leslie L. Wilkes
Mr. and Mrs. Michael J. Wilkowski
Ms. Mary S. Williams
Mrs. Monique Williams
Mr. and Mrs. Randolph K. Wilson, Sr.
Ms. Minnie Wingster
Ms. Donna A. Winters
Ms. Mary Wise
Ms. Karen A. Yeager
Your Pie



275 FUND: LEAD THE WAY

Bethesda kicked off fundraising for Lead the Way with a December breakfast for corporate and community leaders. O'Shea Hightower, a member of the class of 2016, shared his Bethesda experience with the attendees, Dr. David Tribble provided an overview of Bethesda's Lead the Way vision, and Andrea Dove called for community support through donations and partnerships. In the spring, Bethesda's Board of Governors led the charge to establish a fund in honor of Dr. Tribble. During the Scholarship Gala, Mrs. Ellen Bolch presented the initial results of the efforts to establish The David Tribble President's Fund. It is our hope that people continue to infuse this fund bearing Dr. Tribble's name.

Dr. and Mrs. Steve Acuff
Mr. and Mrs. Norman C. "Andy" Anderson, Jr.
Mr. and Mrs. Joe Barnard
Mr. Gus H. Bell III
Mr. and Mrs. William D. Bennisson
Ms. Elizabeth L. Blake
Dr. and Mrs. Sidney J. Bolch III
Col. George W. Bowen
Mr. and Mrs. Daniel H. Bradley
The Cartledge Foundation, Inc.
Mr. Charlie Compton
Mr. and Mrs. Charles B. Compton, Jr.
Mr. and Mrs. Hurley S. Cook, Jr.
Mr. and Mrs. Trey Cook
Mrs. William Corbin
Mr. and Mrs. F. Reed Dulany III

Mr. and Mrs. E. Robert Ernest
Mr. and Mrs. Jason B. Ford
Mr. and Mrs. Nelson Gassman
Mr. and Mrs. Jerome F. Haggerty
Dr. Melanie Helmken and Mr. John C. Helmken II
Mr. and Mrs. Robert S. Jepson, Jr.
Mr. and Mrs. Bob Kraft
Mr. and Mrs. Christian Lewis
Mr. and Mrs. John G. Lientz
Ms. Lucy T. Little
Mr. and Mrs. J. Cliff McCurry
Mr. Butch Miltiades
Monroe Welfare Foundation
Dr. and Mrs. William T. Moore
Mrs. Archibald Morris
The Parker Companies, Inc.

Dr. and Mrs. Paul M. Pressly
Mr. and Mrs. L. Allan Reynolds, Jr.
Mr. and Mrs. Carlton Sheets
Mrs. Charles L. Sparkman
Mr. and Mrs. Gerald D. Stephens
SunTrust Foundation
Mr. and Mrs. James Trolinger
The Ulmer Foundation
Mr. and Mrs. William B. Verell
Dr. and Mrs. Jules Victor III
Mr. and Mrs. Robert H. Weinbauer
Mr. and Mrs. Anthony V. Wilson
Ms. Donna A. Winters
Women's Board of Bethesda
Mrs. Mary Ellen Yarbrough





Bethesda is grateful for those who applied for their 2016 GA education tax credit in the summer and fall of 2015. The popularity of this tax credit has grown such that **all** \$58 million of tax credits for the state of Georgia were claimed on January 1, 2016. On the first day of submission, the GA Department of Revenue received more than \$108 million in applications. Therefore, each application was approved, but pro-rated 53%. We hope that will not deter you from applying each year, because we need this support more than ever! During the 2015-16 academic year, more than 50% of Bethesda's students qualified for and received a GOAL Scholarship as part of their overall financial aid package.

As we look toward the 2017 tax year, we hope that all GOAL contributors who missed their opportunity in 2016 will apply as soon as possible for their 2017 tax credits. GOAL Scholarships provide critical funding for students and even pro-rated approvals help fill the tuition funding gap that face many Bethesda families. Please visit www.BethesdaAcademy.org or www.goalscholarship.org today to apply.

Mr. James Anderson
Mr. and Mrs. David Angell
Mr. and Mrs. Richard Arb
Mr. and Mrs. Joseph Barnard II
Mr. and Mrs. Loren Beals
Mr. Henry Bell
Mr. and Mrs. William Bennison
Mr. Ira Berman and Ms. Helen Borrello
Mr. and Mrs. Denis Blackburne
Mr. and Mrs. Gary Bocard
Dr. and Mrs. Sidney Jefferson Bolch III
Mrs. Ben Brian, Jr.
Mr. and Mrs. Stewart Bromley
Ms. Elizabeth Brown
Mr. and Mrs. Charles Canter
Mr. and Mrs. Raymond Cartledge
Mrs. Verna Chapman
Mr. and Mrs. Chip Compton
Mr. and Mrs. Robert Contino
Mr. and Mrs. Hurley Cook III
Mr. and Mrs. Cliff Dales
Mr. and Mrs. David Dawson
Mr. Brian Dean and
Ms. Sarah Lasseter
Mr. and Mrs. Clifford DeVan
Mr. and Mrs. Michael Dobbs
Ms. Andrea Dove
Mr. and Mrs. Robert Doyle
Mr. and Mrs. John Dunn
Mr. and Mrs. Terry Durrence
Mr. Michael Eckmann
Dr. and Mrs. Keith Ellis
Mr. and Mrs. Samuel Everitt
Mr. and Mrs. Timothy Farley
Mr. and Mrs. Geoffrey Fenstermacher

Mr. and Mrs. Clarke Field, Jr.
Ms. Janine Finn
Mr. and Mrs. John Fishburne
Mr. and Mrs. Samuel Gallagher
Mr. and Mrs. Sean Gill
Mr. and Mrs. Rick Gowthrop
Mr. and Mrs. George Grady
Ms. Ellen Grimm
Mr. and Mrs. David Grosse
Mr. Gregory Grosse
Dr. and Mrs. Dieter Gunkel
Mr. and Mrs. Cyrus Harden III
Ms. Lynn Harrington
Mr. Stephen Harris
Mr. and Mrs. William Heald
Dr. Melanie Helmken and
Mr. John Helmken
Mr. and Mrs. Edwin Hill
Mr. and Mrs. Will Holland
Mr. and Mrs. Richard Hoover
Mr. and Mrs. Gary Hughes
Mr. and Mrs. Darrell Huffman
Mr. and Mrs. Chip Ingram
Ms. Shannon James
Mr. Rodger Johnson
Dr. Patricia Lee June
Ms. Megan Kicklighter
Mr. and Mrs. Keith Kilgore
Mr. and Mrs. Wayne Kuhn
Mr. and Mrs. Kenneth Larsen
Ms. Beth Logan
Ms. Teresa Longworth
Dr. and Mrs. Gifford Lorenz
Mr. and Mrs. Thomas Mackle
Mr. Quentin Marlin

Mr. and Mrs. William Martin
Mrs. Antoinette McBride
Mr. Sam McCachern
Mr. and Mrs. Cliff McCurry, Sr.
Mr. and Mrs. Joseph McGowan
Mr. and Mrs. Dean McKay
Mr. and Mrs. William McNellis
Mr. and Mrs. Mark Medinger
Mr. and Mrs. Jack Meeker
Mr. and Mrs. Alan Mitchell
Mr. and Mrs. Ashby Moncure
Ms. Caroline Monroe
Mr. and Mrs. Will Monroe
Mr. and Mrs. Timothy Mooney
Mr. and Mrs. G. Ronald Morris
Mr. and Mrs. Mark Moss
Ms. Jane Nangle
Mr. and Mrs. Ali Nasr
Mr. and Mrs. Robert Nickels
Mr. and Mrs. Roger Nord
Mr. and Mrs. John Otjen
Mr. and Mrs. Julian Pace
Mr. and Mrs. James Pannell
Mr. Carl Pedigo and Ms. Kathleen Horne
Mr. and Mrs. William Peterson
Ms. Joan Pierce
Mr. Frank Powell
Dr. and Mrs. Paul Pressly
Ms. Rebecca Radovich
Mr. and Mrs. Geoffrey Ramage
Mr. and Mrs. Roy Richard
Mr. and Mrs. William Richards
Mr. and Mrs. Robert Romanelli
Mr. and Mrs. Randall Roulier
Mr. and Mrs. Robb Sallee

Mr. and Mrs. James Scott
Mr. and Mrs. Carlton Sheets
Mr. and Mrs. Ken Sirlin
Mrs. Elizabeth Skeadas
Mr. and Mrs. Douglas Spadaro
Mrs. Charles Sparkman
Ms. Jaime Sullivan
Mr. and Mrs. Marcus Tate
Mr. and Mrs. John Telgener
Mr. and Mrs. Jack Tesinsky
Mr. William Tildes
Dr. and Mrs. Thomas Tribble
Mr. and Mrs. Jim Trolinger
Mr. and Mrs. Philip Turek
Dr. Patricia Turner
Mr. and Mrs. Kent Urness
Ms. Peg Utley
Mr. and Mrs. Charlton Veazey
Mr. and Mrs. Michael Viers
Mr. and Mrs. Terry Warfield
Mr. and Mrs. Wiley Wasden III
Mr. and Mrs. Don Waters
Mr. Albert Wieners
Mr. and Mrs. Robert Wight
Mr. and Mrs. Lee Wilkes
Dr. and Mrs. Leslie Wilkes
Mr. Barry Wright and
Ms. Catherine Glyn-Jones
Mr. and Mrs. William Wright
Mrs. Mary Ellen Yarbrough

For more information about the GOAL Scholarship Program, contact Andrea Dove at 912.644.4376 or andrea.dove@bethesdaacademy.org.

At the close of the 2015-16 fiscal and academic year, Dr. David Tribble retired after 25 years at Bethesda's helm and Ms. Minnie Wingster also ended her 30 year reign over Bethesda's Dining Hall. There were many goodbyes said, "last times" celebrated, and even a few standing ovations of appreciation throughout the year. Some events were public and some were held only for the school family, where the students took the lead in recognizing "Doc" and Ms. Minnie. Bethesda was, indeed, extraordinarily blessed by the dedication, loyalty, guidance, and energy Dr. Tribble and Minnie shared during their tenure. They led and fed Bethesda through many organizational changes, accreditations, Chapel services, renovations, graduations, Anniversary Days, athletic events, a few state championships, even more *near-state* championships, and many other special events and celebrations. Doc and Minnie were "all in" all the time, whether planning a menu and food preparation for a special corporate or donor breakfast or whether participating in the Ice Bucket Challenge, they were ready and willing to support the effort!

It is difficult to count the lives they touched along the way and impossible to count how the lives they touched went on to positively impact others.



THANK YOU AND GODSPEED,
DR. TRIBBLE AND MS. MINNIE!



PREPARING TOMORROW'S LEADERS AND ENTREPRENEURS BY
INSPIRING YOUNG MEN TO DISCOVER THEIR
ACADEMIC, SOCIAL, AND SPIRITUAL POTENTIAL.

School Office	912.351.2055
Admissions	912.351.2068
President's Office	912.351.2042
Development Office	912.644.4376

www.BethesdaAcademy.org



9520 FERGUSON AVENUE | SAVANNAH, GA 31406
P.O. BOX 13039 | SAVANNAH, GA 31416
WWW.BETHESDAACADEMY.ORG